

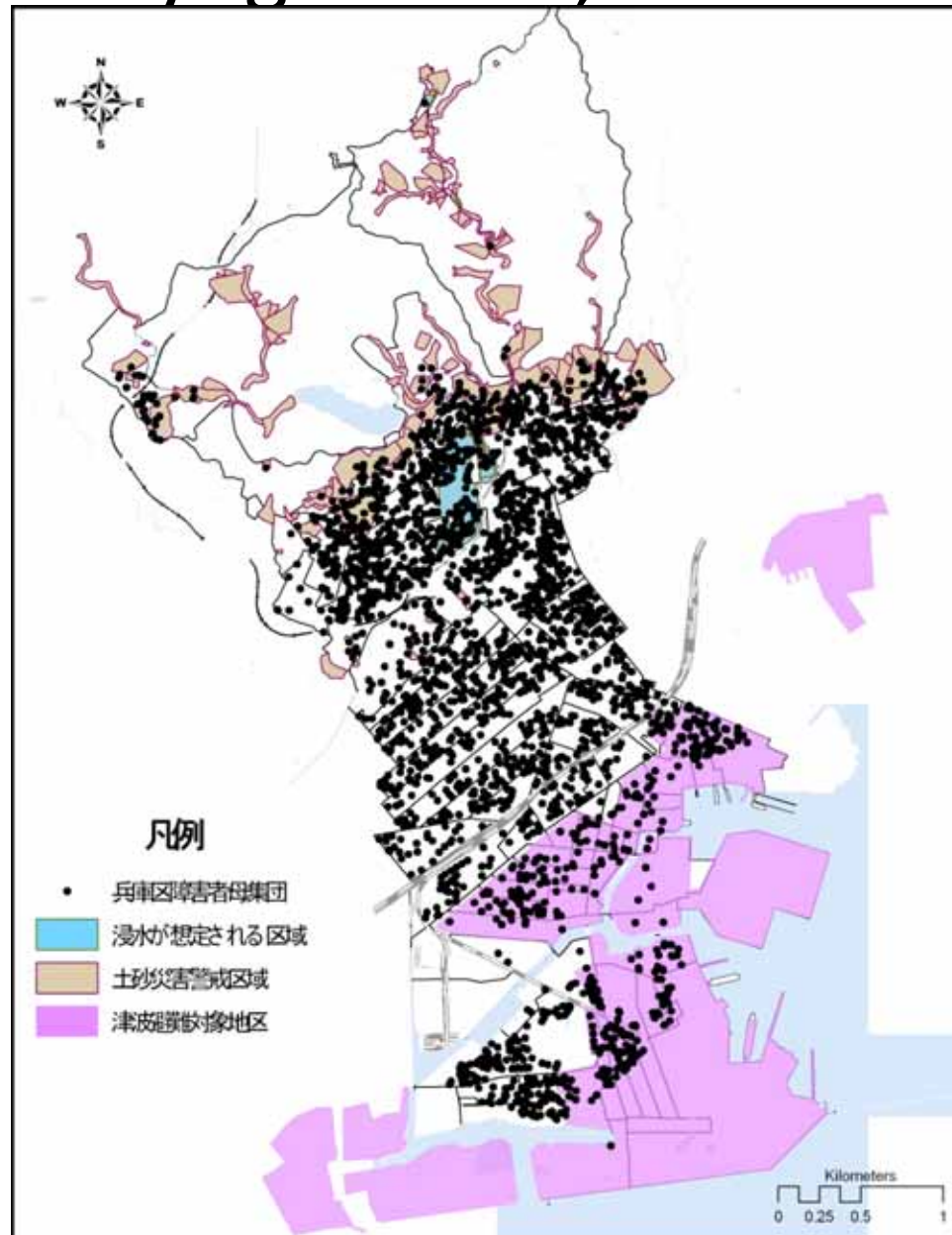
Evacuation and Sheltering
Assistance Planning for Special
Needs Population: Kobe
Disadvantaged Population Mapping
Project

July 17th , 2009

Natural Hazards Wrokshop

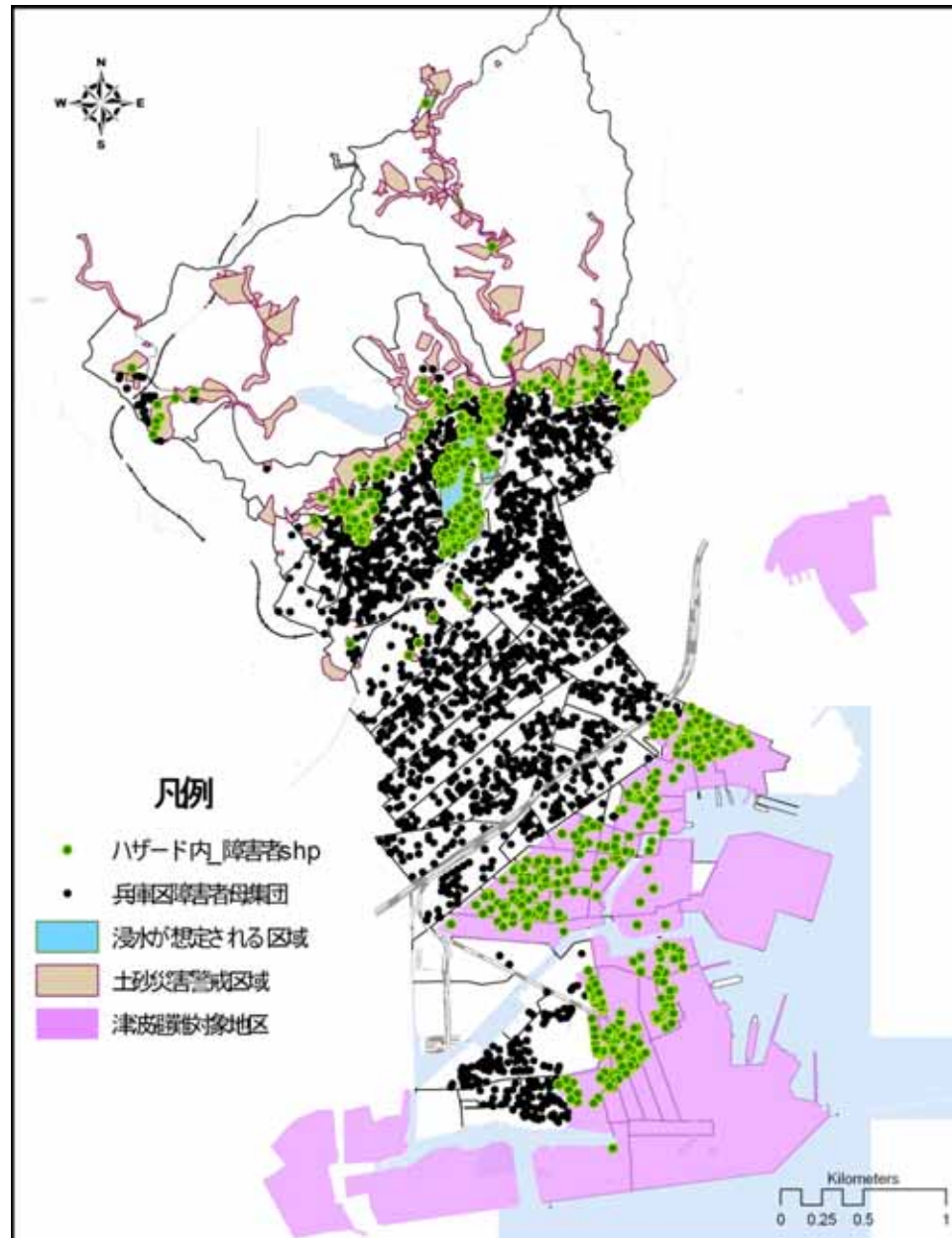
Shigeo Tatsuki
Doshisha University

4,411 Persons with Physical Disabilities Residing in Hyogo Ward, Kobe City



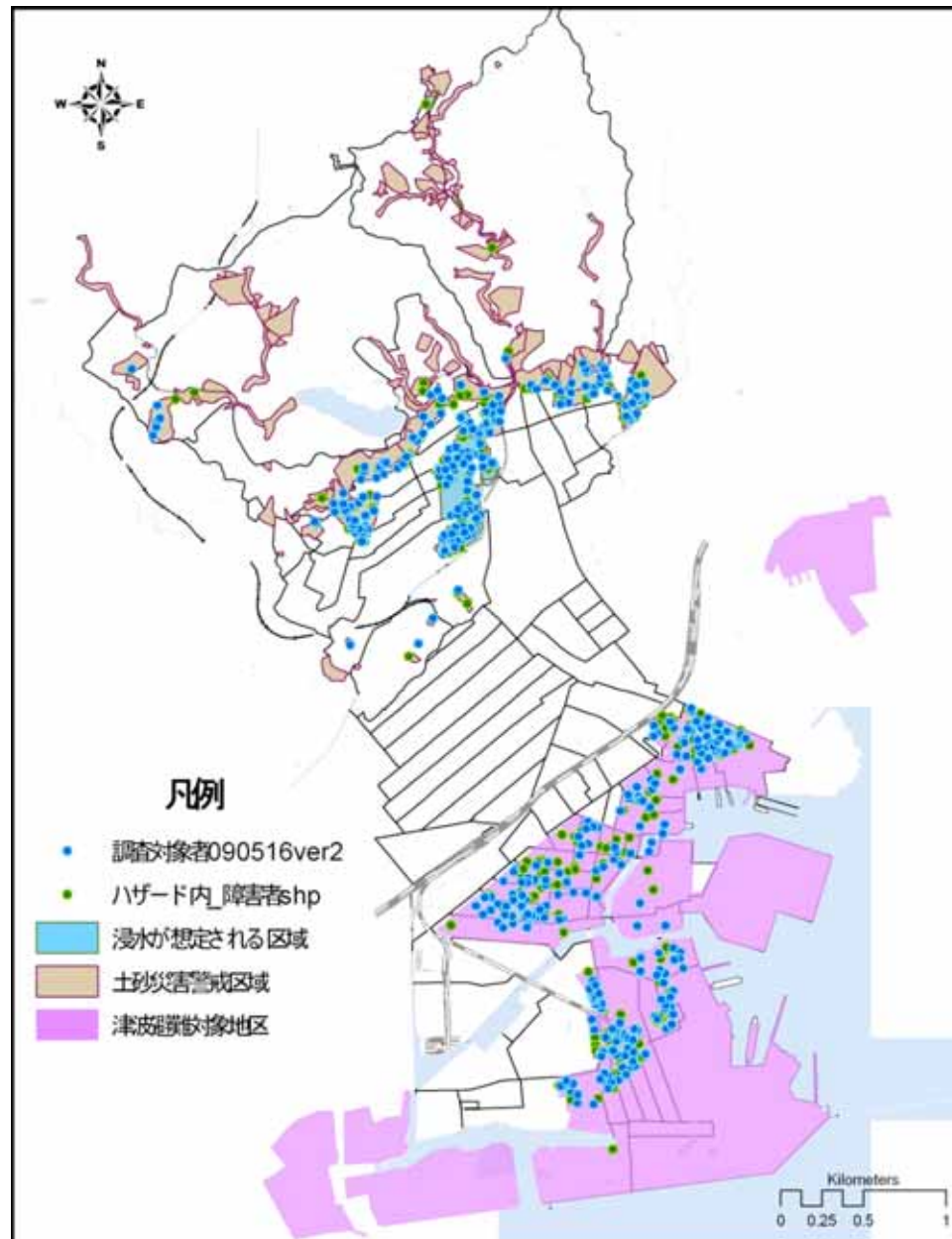
N=4,411

914 Persons with Physical Disabilities were Residing in Hazardous Areas

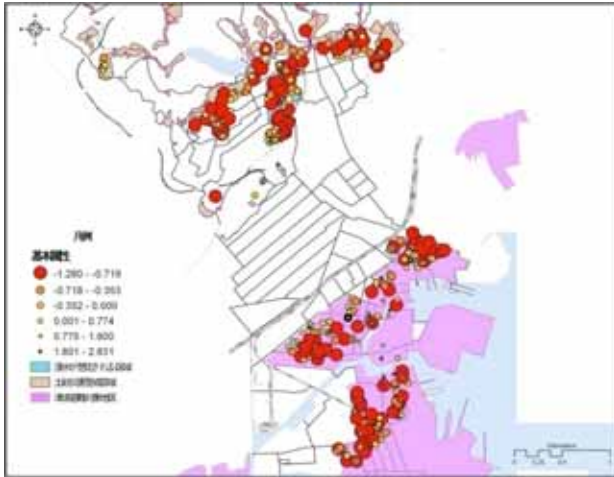


N=914

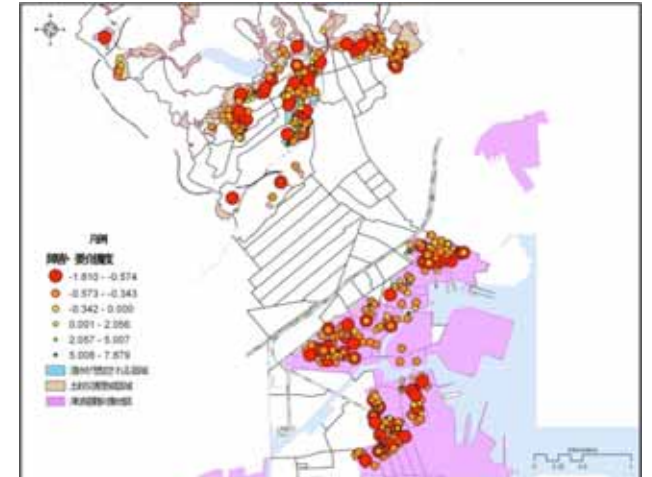
612 (67%) out of 914 PWPD in Hazardous Areas Agreed to Structured Interviews



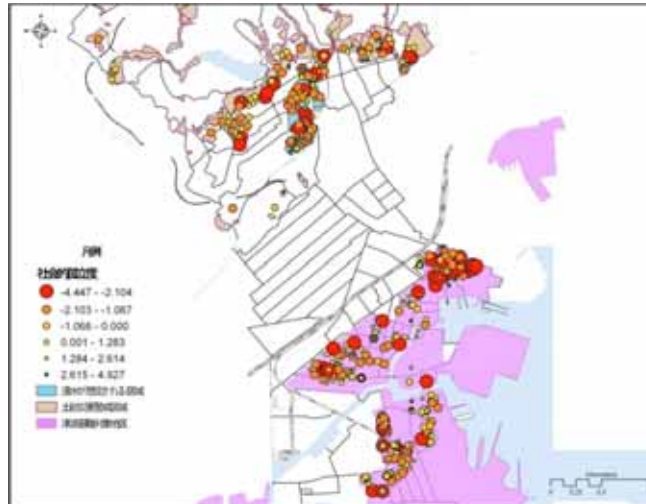
N=612 (67%)



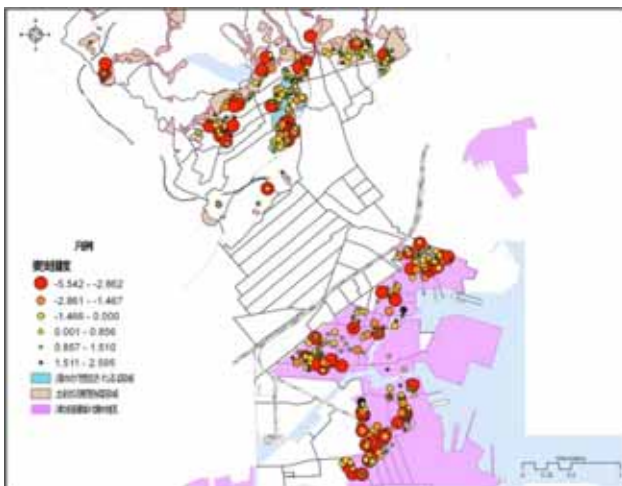
Age/Gender



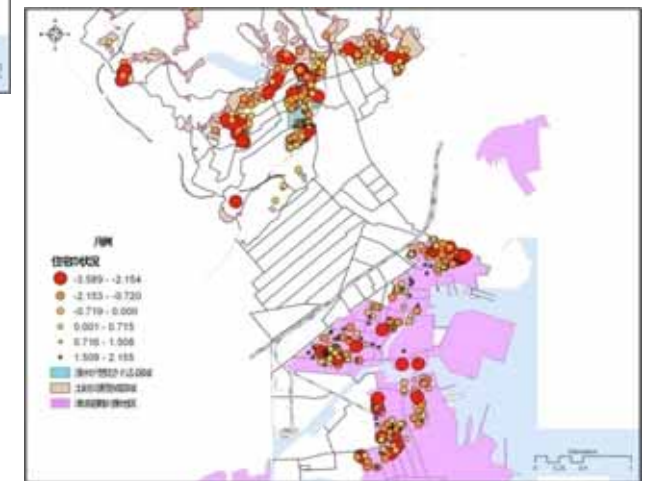
Physical Disability



Social Isolation



Physical Immobility



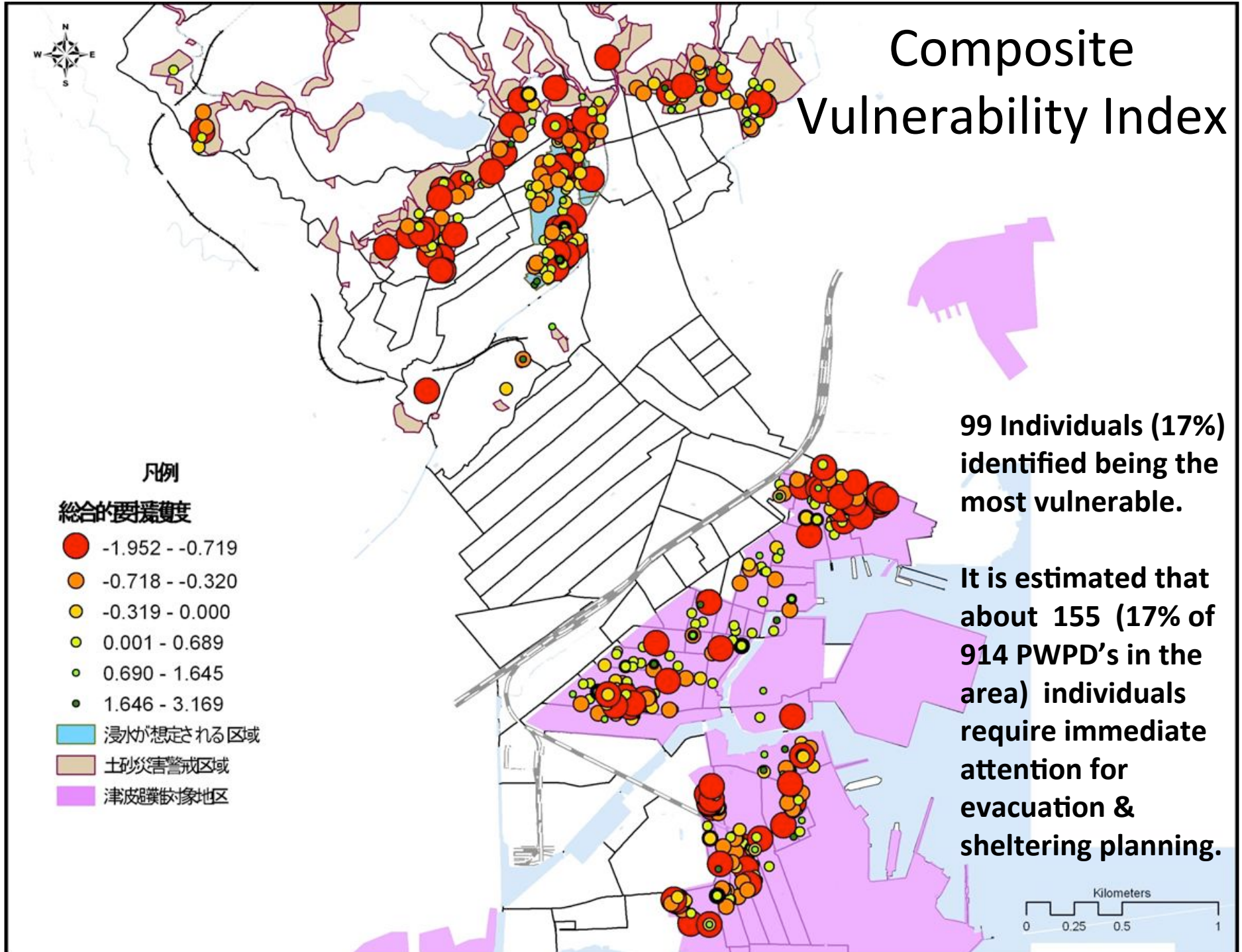
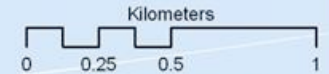
Housing Fragility

Composite Vulnerability Index

99 Individuals (17%) identified being the most vulnerable.

It is estimated that about 155 (17% of 914 PWPD's in the area) individuals require immediate attention for evacuation & sheltering planning.

- 凡例
- 総合的要害度
- -1.952 - -0.719
 - -0.718 - -0.320
 - -0.319 - 0.000
 - 0.001 - 0.689
 - 0.690 - 1.645
 - 1.646 - 3.169
- 浸水が想定される区域
 - 土砂災害警戒区域
 - 津波襲撃対象地区



Weighted Population Density by Composite Vulnerability Index

