



BLOG

PHOTOS & VIDEO

BRIEFING ROOM

ISSUES

the ADMINISTRATION

the WHITE HOUSE

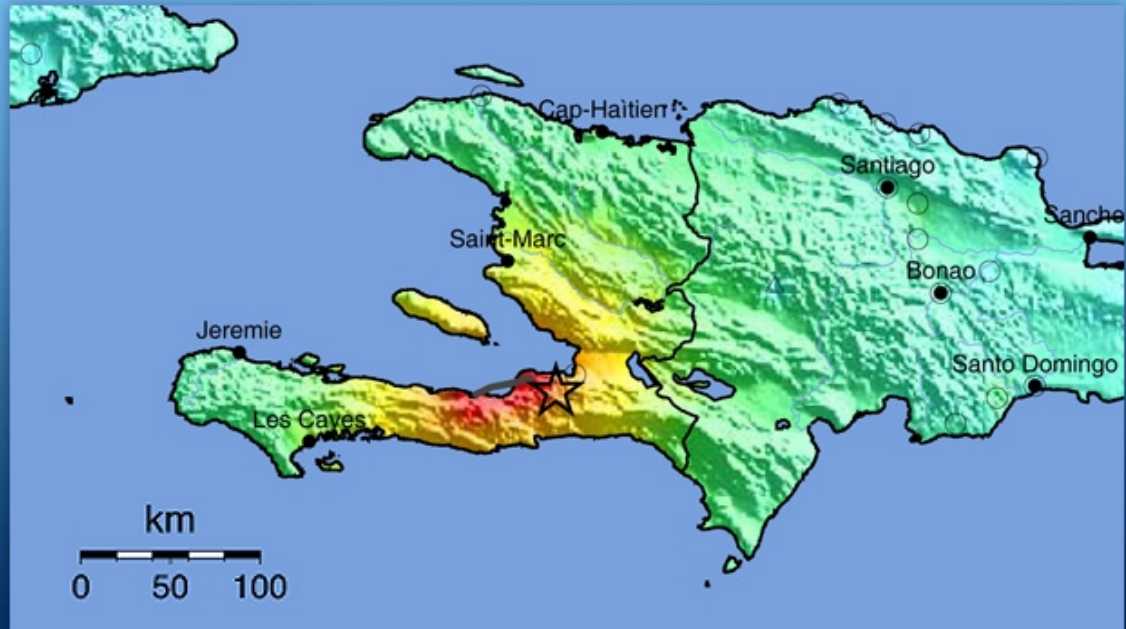
our GOVERNMENT

HELP for HAITI

The President speaks on the urgent situation after the earthquake in Haiti and the government's response. Read his remarks and learn how to contribute to the relief effort.

Learn More

- 1
- 2
- 3
- 4



Map courtesy of USGS

A NEW FOUNDATION



The President's Plan for Health Insurance Reform

Cut through the rhetoric on health insurance reform. Read the essentials of the President's plan, and watch a video with highlights of his speech to Congress.

Learn More

← BACK | NEXT →

SEARCH the SITE

Search WhiteHouse.gov Search

PHOTO of the DAY



THE BLOG

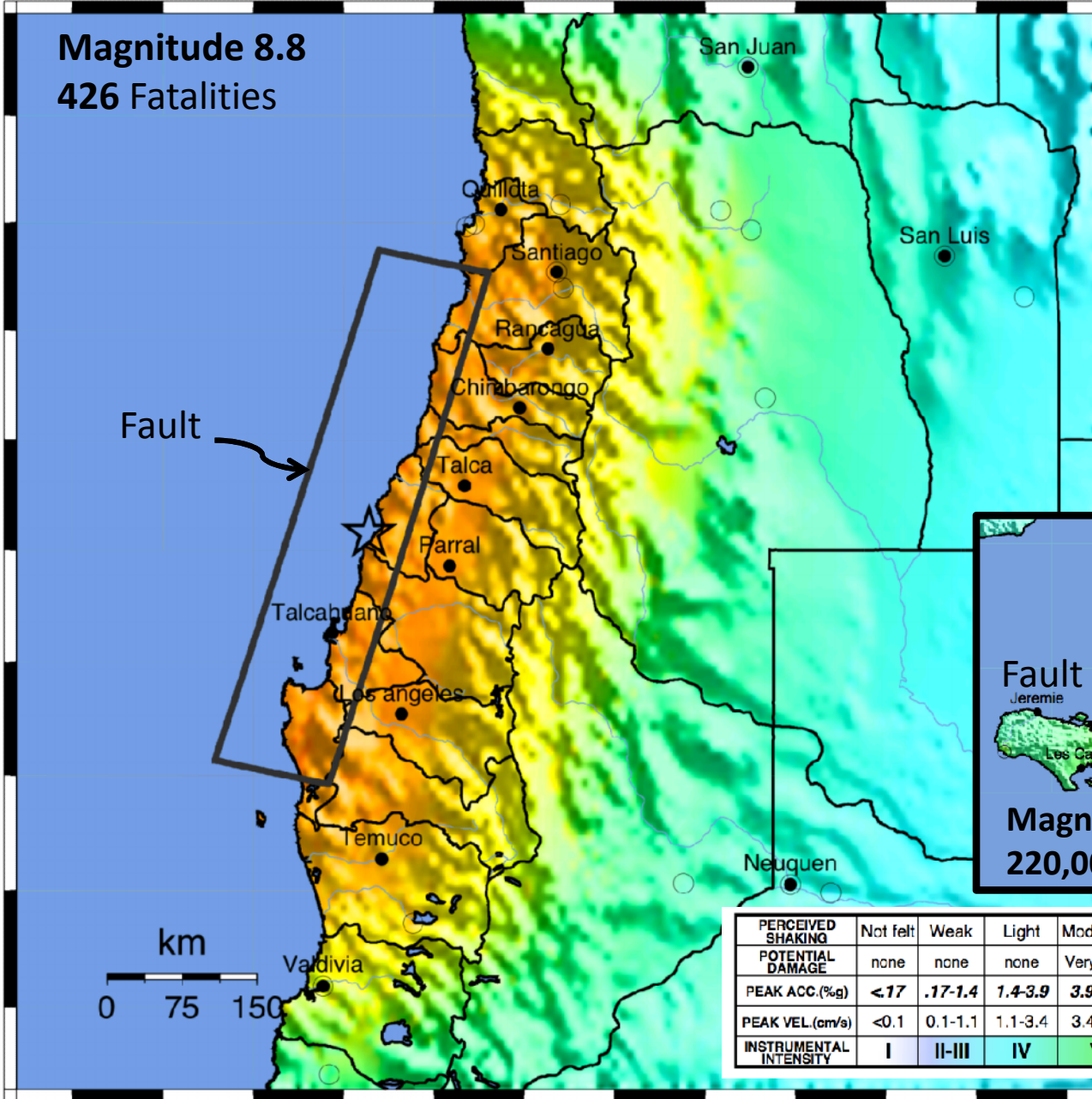
FEATURED LEGISLATION

USGS ShakeMap : OFFSHORE MAULE, CHILE

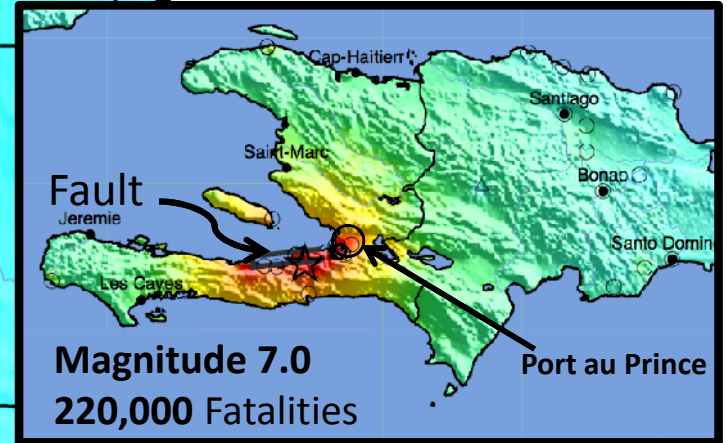
Sat Feb 27, 2010 06:34:14 GMT M 8.8 S35.85 W72.72 Depth: 35.0km ID:2010tffan

**USGS ShakeMap
Estimated Shaking
Intensities**

Same Map Scale!



Haiti, Jan 10, 2010



PERCEIVED SHAKING	Not felt	Weak	Light	Moderate	Strong	Very strong	Severe	Violent	Extreme
POTENTIAL DAMAGE	none	none	none	Very light	Light	Moderate	Moderate/Heavy	Heavy	Very Heavy
PEAK ACC.(%g)	<0.17	.17-1.4	1.4-3.9	3.9-9.2	9.2-18	18-34	34-65	65-124	>124
PEAK VEL.(cm/s)	<0.1	0.1-1.1	1.1-3.4	3.4-8.1	8.1-16	16-31	31-60	60-116	>116
INSTRUMENTAL INTENSITY	I	II-III	IV	V	VI	VII	VIII	IX	X+

Rebuilding for Resilience: How Science and Engineering Can Inform Haiti's Reconstruction

March 22 - 23, 2010

University of Miami, Coral Gables, FL



Convened by

National Science and Technology Council
Subcommittee on Disaster Reduction

Co-sponsored by

U.S. Department of State
U.S. Agency for International Development
United Nations International Strategy for Disaster Reduction

Organized by the IRIS Consortium

With support from:

NASA
National Science Foundation
U.S. Geological Survey

Rebuilding for Resilience: How Science and Engineering Can Inform Haiti's Reconstruction

March 22 - 23, 2010

University of Miami, Coral Gables, FL



Key Findings

- Hazard Assessment for Earthquakes, Inland Flooding, and Landslides
- Engineering Issues for Buildings and Critical Infrastructure
- Capacity Building
- Long-Term Data Needs

http://www.iris.edu/hq/haiti_workshop/