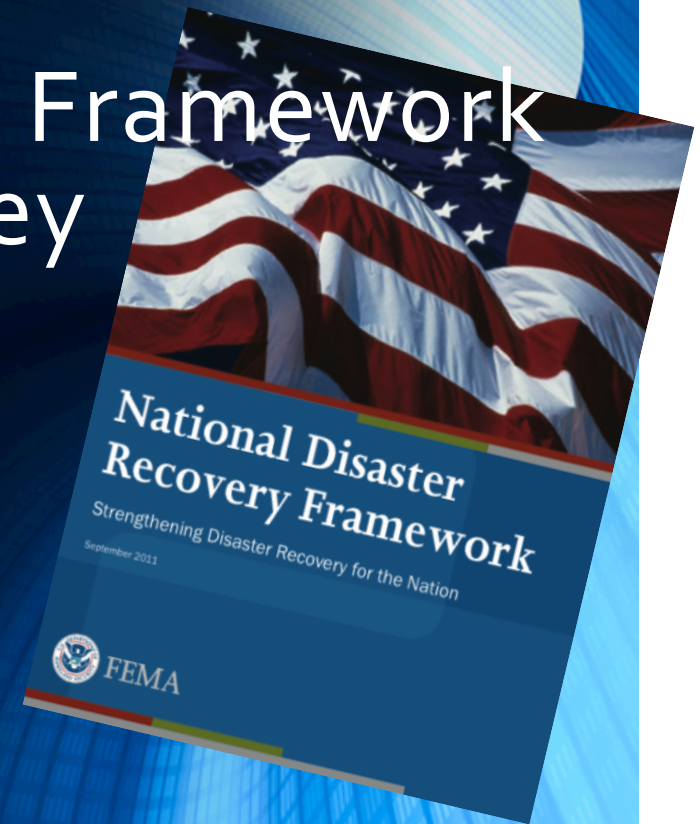


# Implementing the National Disaster Recovery Framework Hurricane Sandy: New Jersey

BYRON MASON, PROGRAM ANALYST  
U.S. HEALTH & HUMAN SERVICES  
ASPR OEM DIVISION OF RECOVERY



**THE**

**DISCLAIMER**

**DISCLAIMER**

**DISCLAIMER**

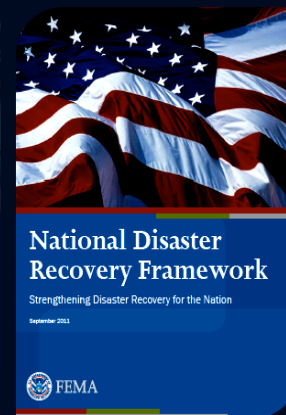
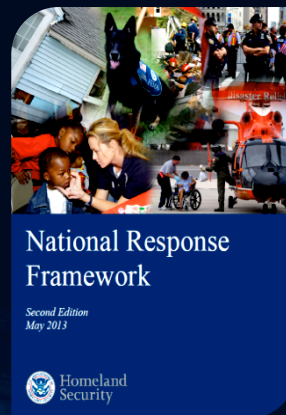
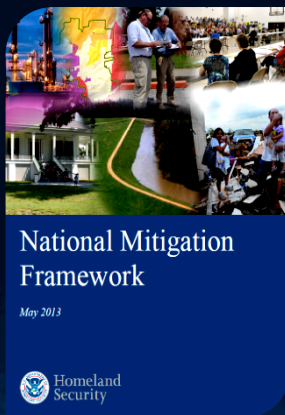
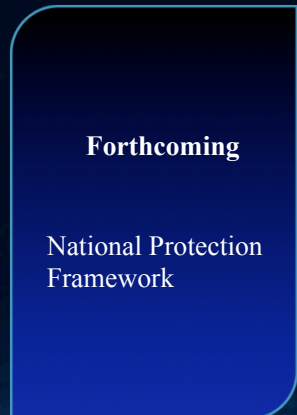
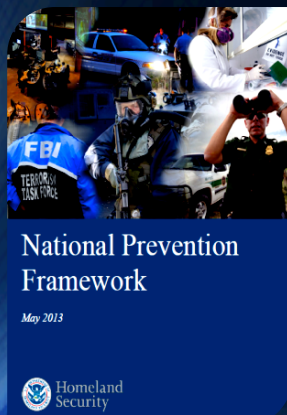
# The National Preparedness Goal

Organizes 31 core capabilities into 5 mission areas



# Inside the Frameworks

- Define the mission area's core capabilities, along with key examples of critical tasks
- Define coordinating structures—either new or existing—that enable the Whole Community to work together to deliver the core capabilities
- Summarize the roles and responsibilities of each part of the Whole Community
- Describe the relationships to the other mission areas



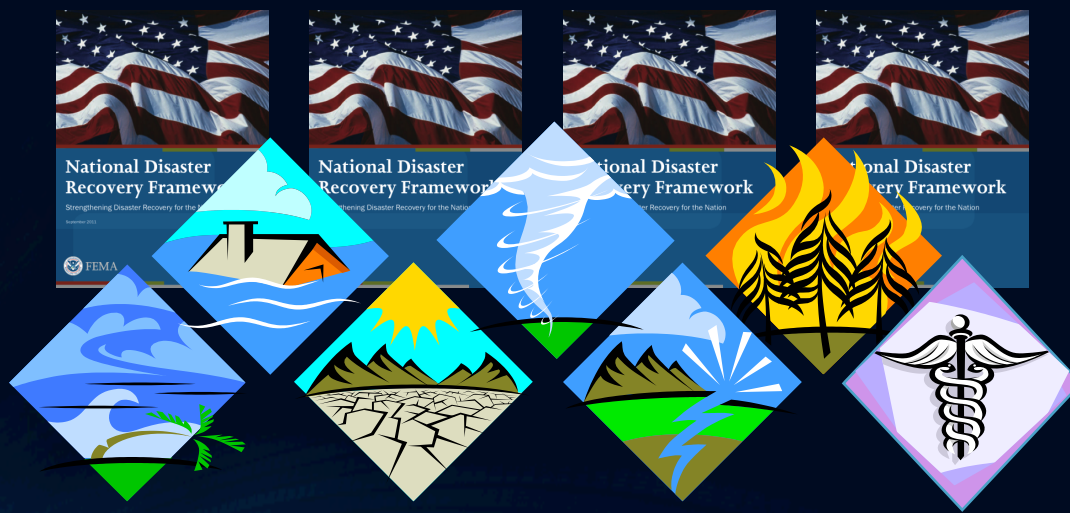
# National Disaster Recovery Framework

- Provides guidance that enables effective recovery support to disaster-impacted States, Tribes and local jurisdictions.
- Provides a flexible structure that enables disaster recovery managers to operate in a unified and collaborative manner.
- Focuses on how best to restore, redevelop and revitalize the health, social, economic, natural and environmental fabric of the community and build a more resilient Nation.

# NDRF Scope: All-Hazards

Applies to Stafford Act & Non-Stafford Act disasters

- Components of the NDRF were piloted following Joplin, Missouri & Alabama 2011 tornadoes, and Hurricanes Irene and Lee
- Activated & implemented for 2012 Drought; with USDA as the lead
- 1<sup>st</sup> large-scale, full implementation Oct 2012 Hurricane Sandy



# 6 Recovery Support Functions (RSFs)

1. Health & Social Services - HHS
2. Community Planning and Capacity Building - FEMA
3. Economic - Department of Commerce
4. Infrastructure Systems - USACE
5. Housing - HUD
6. Natural & Cultural Resources - Department of the Interior



Corporation for  
**NATIONAL &  
COMMUNITY  
SERVICE** ★★ ★



NATIONAL  
VOLUNTARY ORGANIZATIONS  
ACTIVE IN DISASTER

# HSS RSF Coordinating Agency

## U.S. Department of Health & Human Services

- Established a National HSS RSF Coordinator
- Provides significant engagement and management for the RSF
- Ensures ongoing communication and coordination between the HSS RSF Primary Agencies and Supporting Organizations
- Ensures recovery coordination and communication between Federal agencies and corresponding local, State and Tribal authorities and nongovernmental and private-sector organizations throughout the preparedness, response and recovery phases of a disaster



Cooperation for  
**NATIONAL & COMMUNITY SERVICE** ★★★★★





# HSS RSF Primary Agencies

- Department of Homeland Security:
  - Corporation for National & Community Service
  - Federal Emergency Management Agency
  - National Protection & Programs Directorate
  - Civil Rights and Civil Liberties
- Department of Education
- Department of the Interior
- Department of Justice
- Department of Labor
- Environmental Protection Agency

# HSS RSF Supporting Organizations

- American Red Cross
- Department of Transportation
- National Voluntary Organizations in Disaster
- Small Business Administration
- Treasury
- U.S. Department of Agriculture
- Veterans Affairs



# Post-Disaster HSS RSF Deployment

## *Sandy Recovery Operations*

- Federal Interagency Operations Plan pending
- FEMA appointed FDRC for disaster
- FEMA issued a Mission Assignment to HHS
  - Deploy (1) FTE to engage in mission scoping assessment and support strategy development
    - Byron Mason, HSS RSF Field Coordinator – New Jersey





NRF ESFs

FEMA IA + PA

EO: SRTF

SRIA

NDRF

# Targeted Counties and Communities

- Atlantic
- Bergen
- Cape May
- Cumberland
- Essex
- Hudson
- Middlesex
- Mercer
- Ocean
- Union



# HSS RSF's Core Recovery Missions

- Health Care Services
- Public Health
- Behavioral Health
- Environmental Health
- Food, Drug, and Regulated Medical Product Safety
- Social Services
- Referral to Social Services
- Long-term Recovery Impacts to First Responders
- Children in Disaster



Cooperation for  
**NATIONAL &  
COMMUNITY  
SERVICE** ★★ ★



U.S. Small Business Administration  
**SBA**  
Your Small Business Resource



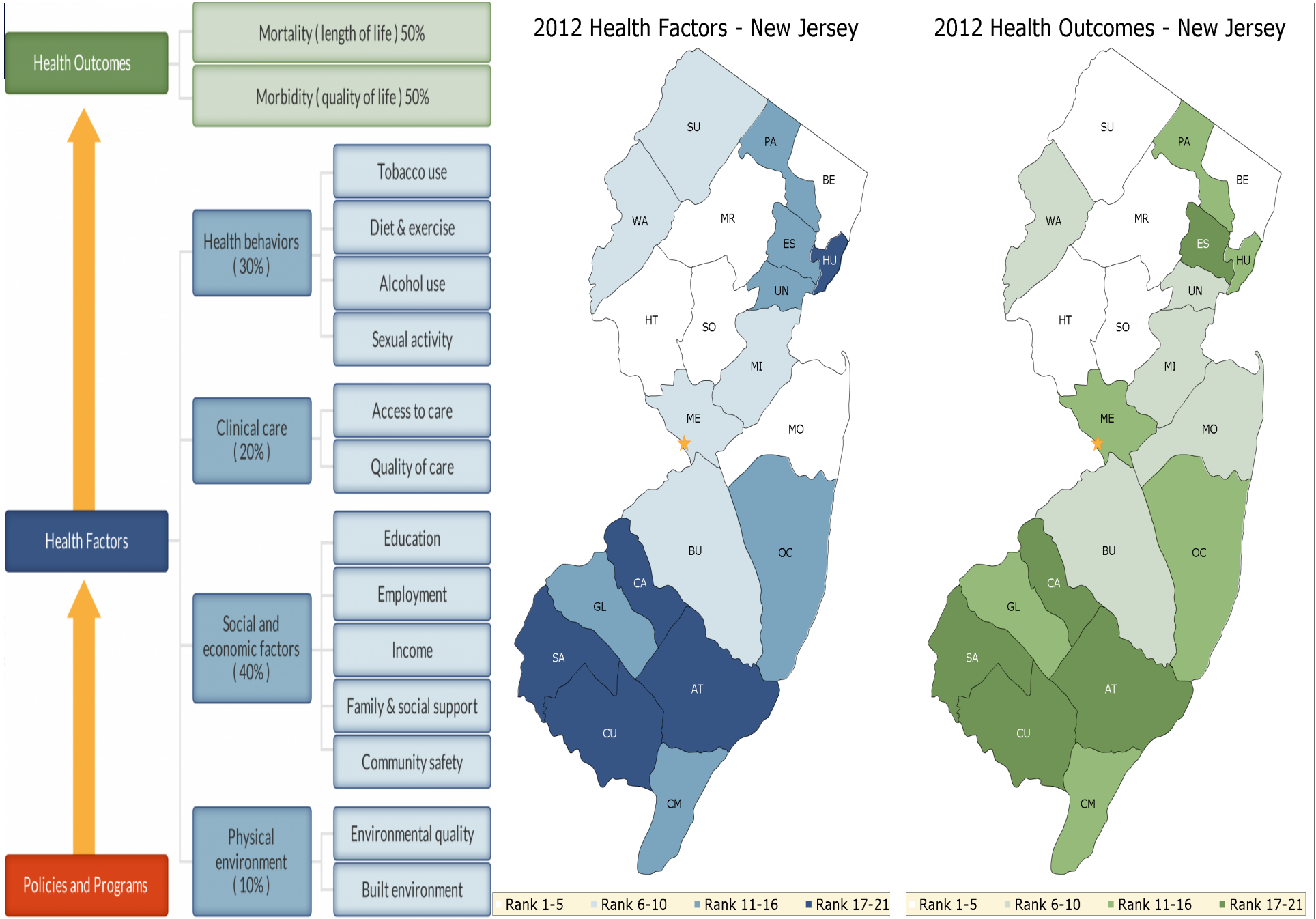
**USDA**



**American  
Red Cross**



NATIONAL  
VOLUNTARY ORGANIZATIONS  
ACTIVE IN DISASTER



# Health & Social Services Inter-RSF Coordination



## Community Planning & Capacity Building

Are health & social services partners represented in community planning discussions?



## Economic

- Prolonged unemployment may have behavioral health implications
- Parents without childcare may not be able to return to work

## Infrastructure Systems

- Are systems that support healthcare facilities' continuity of operations prioritized in recovery?
- Are there mitigation opportunities?



## Natural & Cultural Resources

- Environmental justice
- Environmental health hazards



## Housing

- Are internally displaced disaster survivors able to access services?
- Healthy homes initiatives (asbestos, lead, mold)

# NJ State-Led Disaster Housing Task Force Interagency Sub-Task Forces

## Information Management

Coordinate between government and community-based planning efforts, identifying required resources and information sharing strategies. Establish clear guidelines on authority for implementation of plans.

## Finance

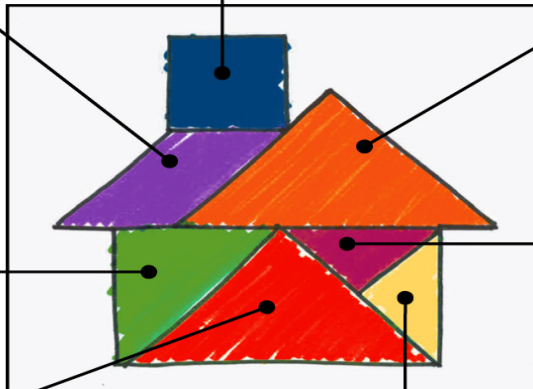
Coordinate efficient distribution and use of disaster assistance funding from governmental, private and non-profit sources. Identify need for disaster-specific funding mechanisms and organizational structures.

## Construction

Facilitate and expedite the repair and development of residential units until sufficient housing has been restored. Address building systems infrastructure, site planning and relevant issues of building codes, environmental standards, labor, and materials. Identify best practices toward mitigation and sustainability.

## Land Use Planning

Identify existing plans and support the development of a master plan for post-disaster land use, as related to residential redevelopment. Address property rights, zoning, preservation and phasing of reconstruction and development.



## Housing Recovery Services

Coordinate the communication of housing-related services available to affected persons and the public at large. Support service providers and case managers in assessing the needs of displaced persons, identifying available resources, analyzing and providing information, identifying gaps in services, and advocating for timely resolutions to evolving issues.

## Interim Housing

Facilitate the provision of housing for displaced people in the interim between emergency sheltering and their return to permanent housing.

## Housing Stock Assessment

Coordinate efficient collection and distribution of residential damage assessment data, addressing physical damages and associated occupancy data over time.



# HOUSING RECOVERY SERVICES

## Housing Recovery Services

Coordinate the communication of housing-related services available to affected persons and the public at large. Support service providers and case managers in assessing the needs of displaced persons, identifying available resources, analyzing and providing information, identifying gaps in services, and advocating for timely resolutions to evolving issues.

### **RECOMMENDED FEDERAL AGENCIES:**

FEMA	HUD
USDA	ACF
Veterans Affairs	SBA
USACE	USPS
HHS	DOI
DOL	DOT
TREASURY	CNCS

### **RECOMMENDED STATE AGENCIES:**

**Emergency Management Lead Agency:** NJ OEM/NJ OHSP

**Human/Social Services Support Agency:** NJ Department of Human Services

#### **Assisting Agencies:**

Department of Banking & Insurance  
NJ Economic Development Authority  
Office of Management & Budget  
NJ Department of Environmental Protection  
Department of Children and Families  
Division of Community Affairs  
Department of Education

### **OTHER STAKEHOLDERS:**

VOAD	AFN and aging advocates
Social workers	Insurance
CBOs	Construction
Legal services	Veterans organizations

# HOUSING

RECOVERY



## NEW JERSEY OFFICE OF RECOVERY AND REBUILDING

### Services

Coordinate the use of housing-related services available to affected persons and the public at large. Support service providers and case managers in assessing the needs of displaced persons, identifying available resources, analyzing and providing information, identifying gaps in services, and advocating for timely resolutions to evolving issues.

### RECOMMENDED FEDERAL AGENCIES:

- |                  |      |
|------------------|------|
| FEMA             | HUD  |
| USDA             | ACF  |
| Veterans Affairs | SBA  |
| USACE            | USPS |
| HHSI             | DOI  |
| DOL              | DOT  |
| TREASURY         | CNCS |

### RECOMMENDED STATE AGENCIES:

Primary Lead Agency: NJ OEM/NJ

Other NJ

Dep  
Division of  
Department of Educa

### OTHER STAKEHOLDERS:

- |                |                         |
|----------------|-------------------------|
| VOAD           | AFN and aging advocates |
| Social workers | Insurance               |
| CBOs           | Construction            |
| Legal services | Veterans organizations  |

BYRON MASON, PROGRAM ANALYST  
U.S. HEALTH & HUMAN SERVICES  
ASPR OEM DIVISION OF RECOVERY  
[BYRON.MASON@HHS.GOV](mailto:BYRON.MASON@HHS.GOV)  
202-308-8142