

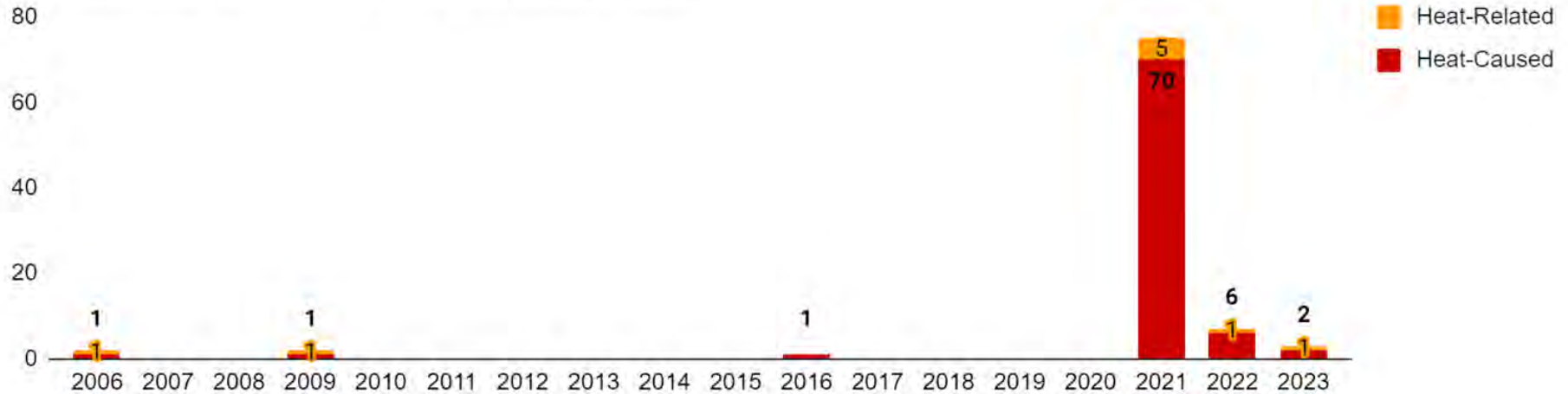


Heat, Housing, and Human Risk: Lessons from the Home Forward Temperature Assessment

September 10, 2024

Heat - Related Deaths in Multnomah County 2006 - 2023

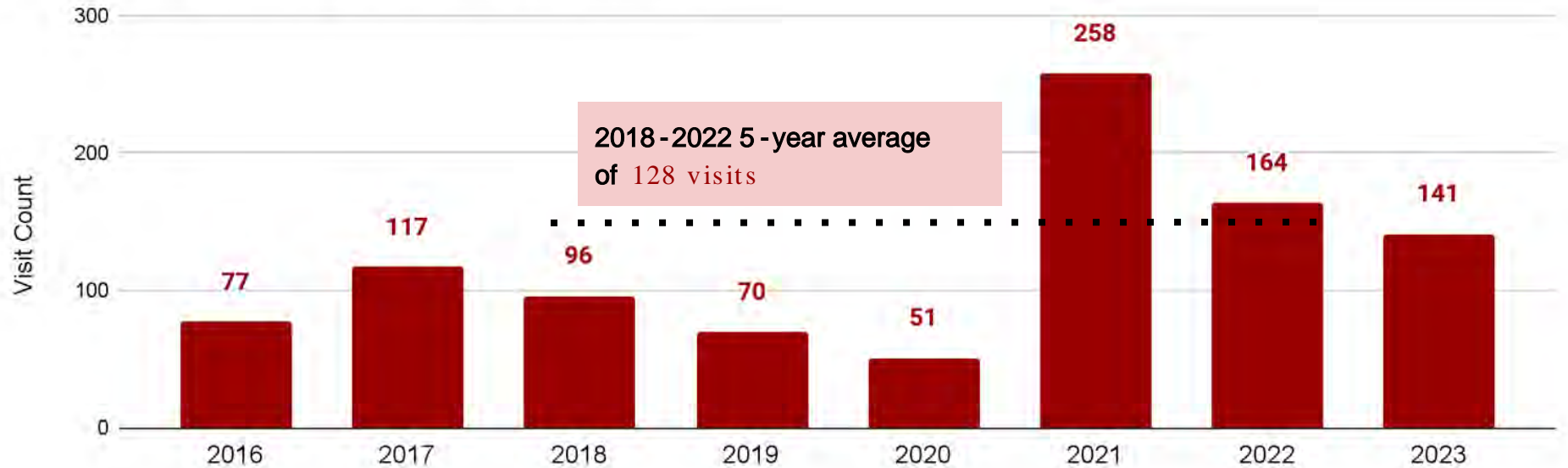
May - September, Multnomah County, 2006-2023, Vital Records



Heat - Related Illness in Emergency Rooms

Heat-Related Illness Visits

May-September 2016-2023, Multnomah County, ESSENCE



Hot days are increasing

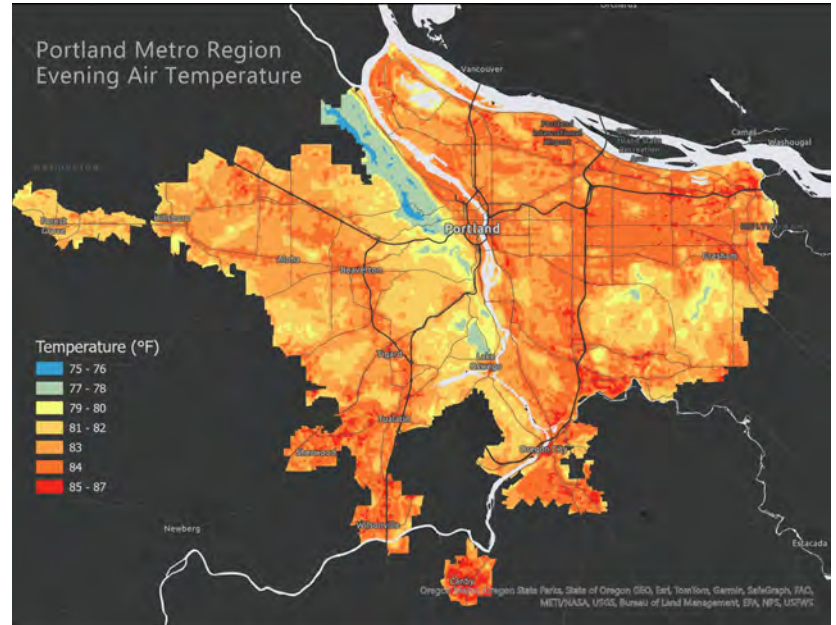
Count of Days by Heat Risk

May - September 2016-2023, PDX International Airport, NWS



Responses to the 2021 heat dome

- Shelter operation changes
- Heat pump/AC programs
- OSHA rules
- Medicaid waiver
- Construction requirements
- Data improvements



- Remote temperature sensors in Home Forward apartments in summer 2022 and summer 2023
- Surveys and focus groups among residents
- Partnership between Portland Bureau of Emergency Management, Multnomah County Health Department, and Home Forward





Dahlke Manor (Y2)



Schrunk Riverview Tower (Y2)



Madrona Place (Y2)



Hollywood East (Y1)



Northwest Tower (Y1)



Peaceful Villa (Y1)

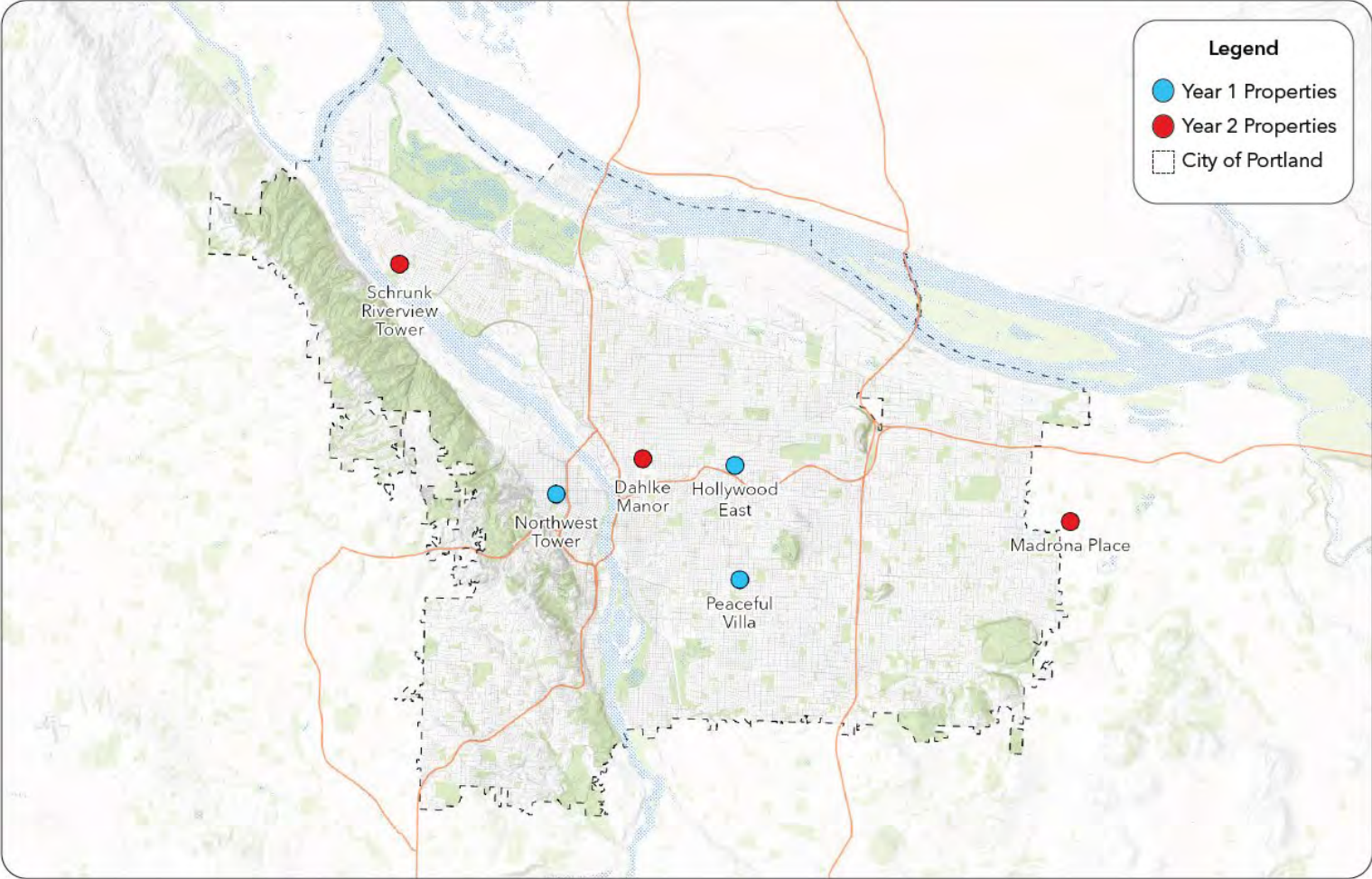


Figure 6. Temperature threshold exceedances by property

