

NC STATE UNIVERSITY

Direct Technical Assistance
Advancing Resilience in Underserved
Communities: Creating a University
Network

Project Team:



Gavin Smith, Ph.D., AICP (PI)

- NCSU Department of Landscape Architecture & Environmental Planning



Celen Pasalar, Ph.D. (PI)

- NCSU Department of Landscape Architecture & Environmental Planning

Research Assistants

Yanhua Lu, Ph.D Candidate

Yui Omori, Master's Candidate

Kelby Stallings, Master's Candidate

Lauren Briley, Master's Candidate

Rebecca Ward, Ph.D.*

Maddie Gresch, MLA*

* Former Research Assistants




U.S. Department of Homeland Security

DHS Acknowledgement:

“This material is based upon work supported by the U.S. Department of Homeland Security under Contract no. 70RSAT21G00000013/70FA6022F00000078.”

DHS Disclaimer:

“The views and conclusions contained in this document are those of the authors and should not be interpreted as necessarily representing the official policies, either expressed or implied, of the U.S. Department of Homeland Security.”



Community Capacity & BRIC DTA

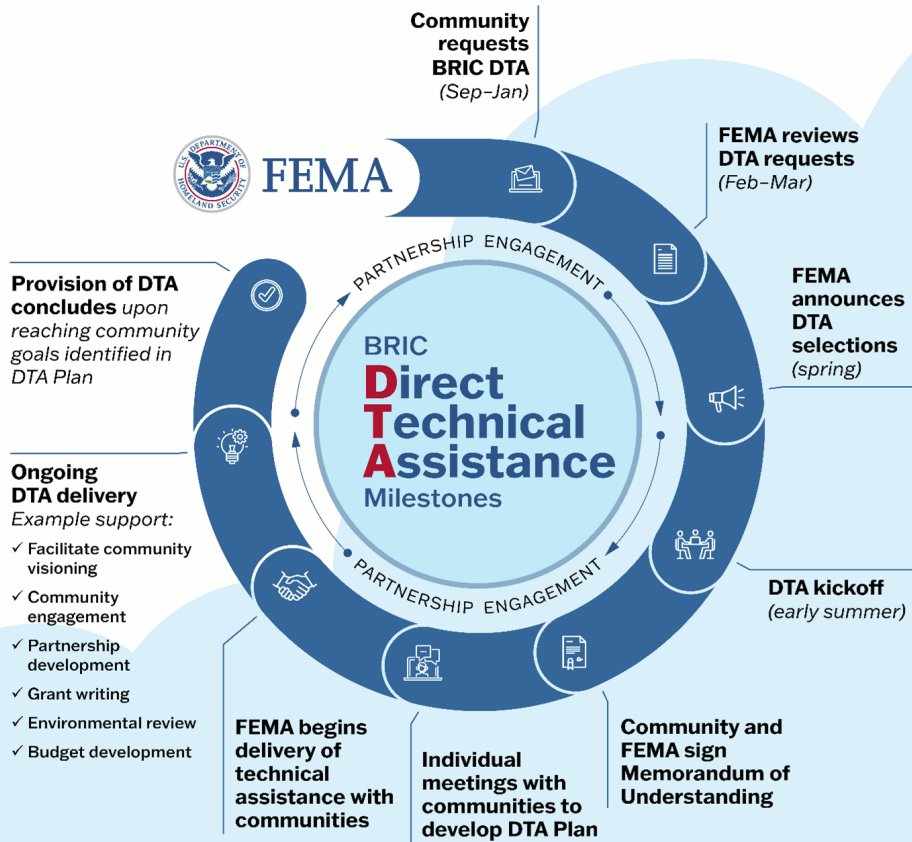
“Research and practice-based evidence has shown that **many communities are struggling to effectively develop, implement, and manage BRIC grants**, particularly when compared to larger and higher capacity communities.”
(FEMA’s SOW for the project, July 2022)

As stated in the October 2022 FEMA Program Support Material for BRIC DTA, “FEMA received an **overwhelming number of requests** during the last BRIC application cycle from communities in need of technical assistance.”

The Missing Piece:

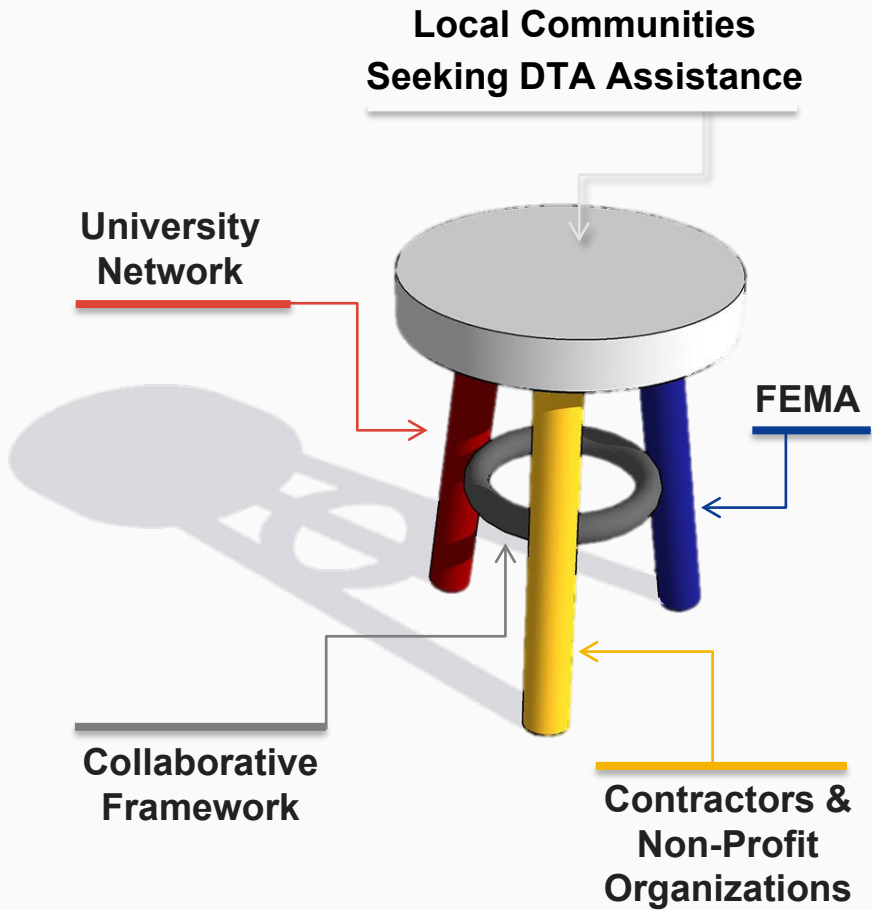
How Can a University Network Strengthen the Delivery of Direct Technical Assistance (DTA) for Hazard Mitigation Assistance, including Building Resilient Infrastructure and Communities (BRIC) Grant Recipients, and Assist Communities Develop and Implement Hazard Mitigation Plans, Climate Resilience Plans, and Natural Hazards Risk Assessments?

The Current BRIC DTA Model



“In addition to providing funding, the BRIC program offers help to communities in the form non-financial Direct Technical Assistance that can provide holistic hazard mitigation planning and project support.”

- FEMA, 2022



DTA Delivery

Embedding University DTA Within A Regional Model

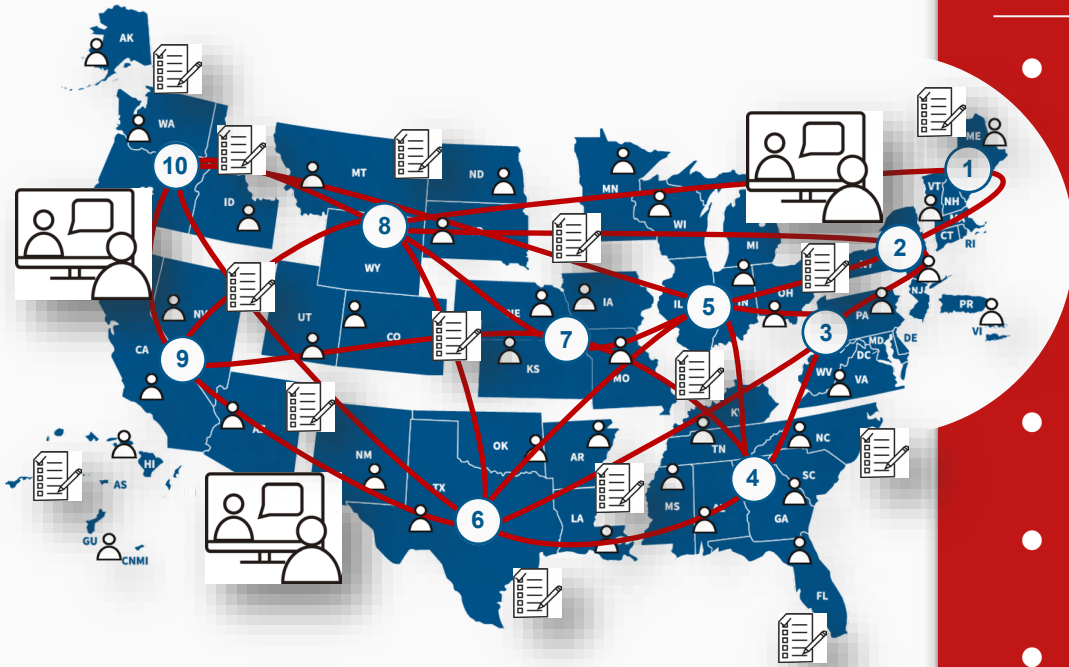
- FEMA Regional Staff
- Contractors
- University Assistance
 - Land Grant Universities
 - Minority Serving Institutions
 - Other Universities
 - Centers and Institutes
 - Sea Grant
 - Extension Disaster Education Network (EDEN)
 - Non-Profits
 - Professional Organizations
 - Regional Planning Organizations
 - Others?



Long Term Goals :

- Establish a nationwide university network to support Direct Technical Assistance
- Assess the performance of the university network and adapt as needed
- Institutionalize the university network within a formal framework
- Develop educational and training curricula for university network members (Faculty, Extension, and Students)

Year 1 Goals:

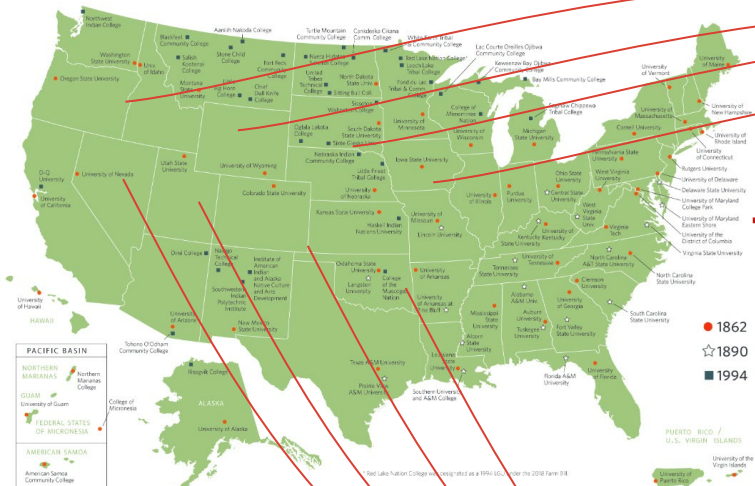


- Interview University Experts
 - Expertise - community engagement, grant writing, climate resilience planning, etc.
 - Commitment to assist over long time periods
- Conduct a National Survey assessing capacity and commitment of experts
- Create a National Network of Experts within a university network
- Establish a Framework to institutionalize the concept
 - University Nodes
 - Other Approaches?

The End Goal: Connecting University Experts with Underserved Communities

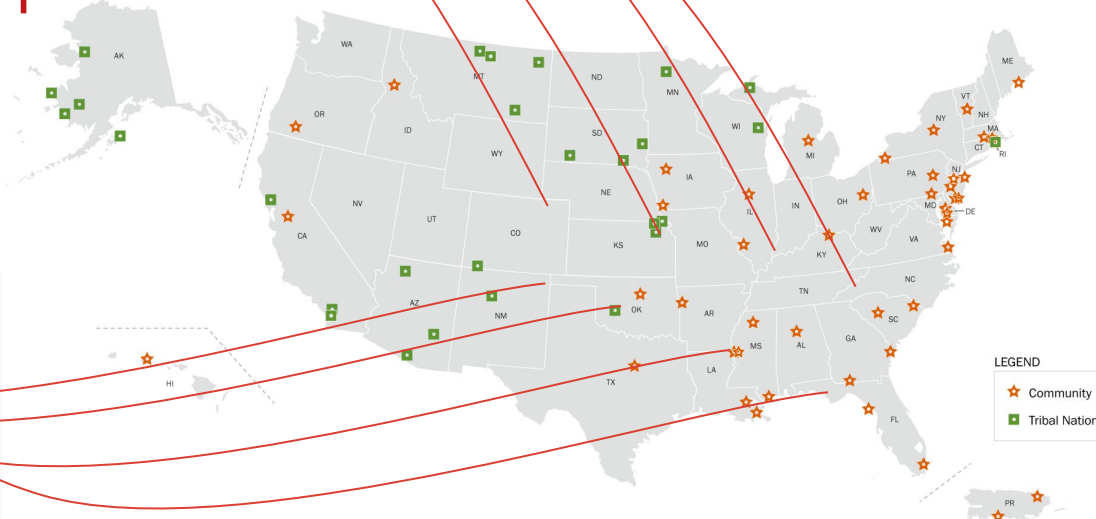

 United States Department of Agriculture | National Institute of Food and Agriculture | www.nifa.usda.gov @USDA_NIFA

NIFA LAND-GRANT COLLEGES AND UNIVERSITIES



<https://www.nifa.usda.gov/land-grant-colleges-universities-map>

Building Resilient Infrastructure and Communities Direct Technical Assistance (BRIC DTA) Fiscal Year 2020–2022 Selections



<https://www.fema.gov/grants/mitigation/building-resilient-infrastructure-communities/direct-technical-assistance/communities>

Our Current Work

Phase 1:

Interviews

Phase 2:

National Survey

Phase 3:

Create an On-Call Grant Assistance
Network

Phase 4:

Establish a National Framework to
Institutionalize the University Network
Concept

Phase 1: Conduct Interviews with Faculty & Engagement Experts

- **Question:** What does it take to assist communities?
- Focus on individuals within University and Institutional systems who have assisted:
 - Communities create hazard mitigation plans and / or risk assessments
 - Communities write successful natural hazard mitigation grant applications
 - FEMA Hazard Mitigation Assistance/Building Resilient Infrastructure and Communities grants



Phase 2: Conduct National Survey to Assess Capacity & Commitment to Assist with HMA & BRIC Grants Management & Hazard Mitigation Planning

- **Purpose:** Determine the technical capacity and willingness of faculty and engagement experts to assist with all aspects of HMA & BRIC grants management
- **Areas of Focus:**
 - Writing Hazard Mitigation Assistance (HMA) & BRIC grants
 - Proposal Development
 - Project Implementation & Management
 - Long-Term Site Management
 - Maintenance of Nature-Based Solutions
 - Open Space Management Post-Buyout



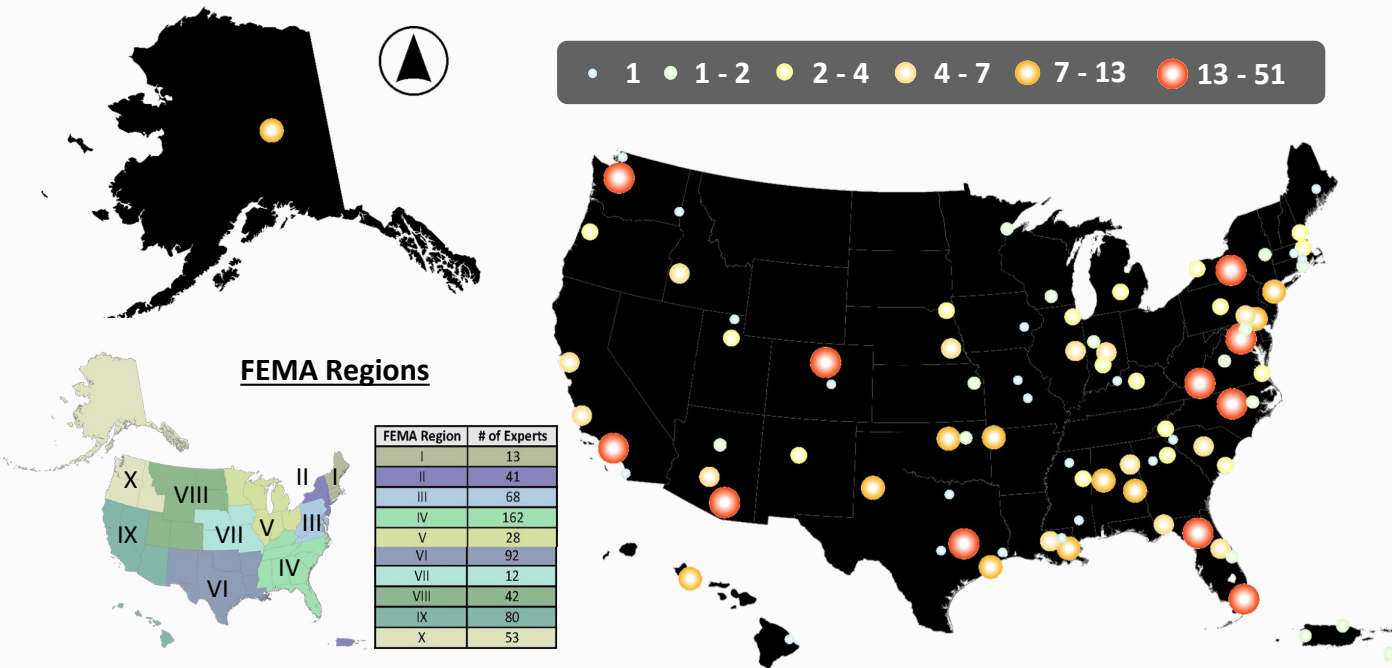
Phase 3: Initiate the Creation of an On-Call Network to Assist Communities with HMA Grants Management & Hazard Mitigation Planning

- **Goal:** Identify University centers and personnel who may be interested in participating in a DTA University Network for hazard mitigation planning and BRIC & HMA grants
- Network may be formed of nodes connecting across FEMA regions and will be informed by the results of the interview, survey, and identified experts.

- Who has the Capacity and Commitment to participate in an on-call Assistance Network?



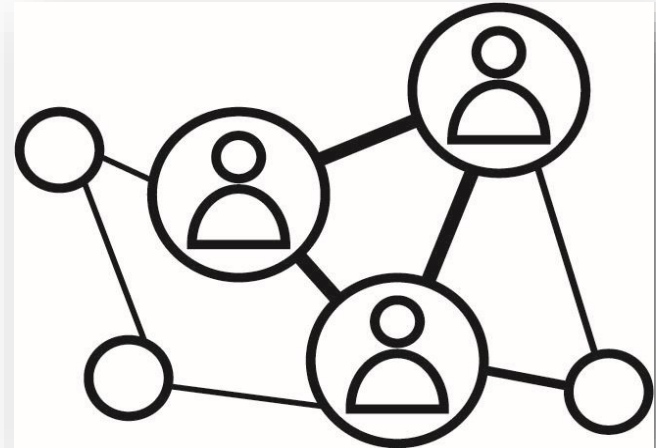
Phase 3: Current Number of Identified Experts



- 700+ individuals have been identified using a snowball sampling technique
- 591 individuals are associated with a University
- 18 individuals are associated with other institutions or nonprofit organizations
- Seeking greater MSI representation

Phase 4: Initiate the Establishment of a National Framework to Institutionalize the University Network Concept

- **Goal:** Create a draft framework for the university assistance network
- Considerations in the Draft Framework Model
 - Existing network structures
 - Theoretical Network Models
 - Lessons from failed and/or failing organizations
 - Creation of Resilience Extension Agents?
- Draft models will be further refined based on interview data, survey data, and feedback from FEMA



Circling Back...

- We are currently focused on survey recruitment (Phase 2)

Are you a faculty member or extension employee at a Land Grant University, Public or Private University or Minority-Serving Institution?



Have you assisted your local community with a hazard mitigation plan, climate resilience plan or risk assessment?

Have you written a successful BRIC or other Hazard Mitigation Assistance grant application for a community?

Are you committed to ongoing community engagement and the delivery of direct technical assistance?

Are you interested in building the capacity of you and your colleagues (including students) to provide direct technical assistance, to include taking training courses?



Survey QR Code:



THEN WE WANT YOU!

Seeking Survey Participants*!

This study explores the capacity and interest/commitment of university affiliated faculty and staff to provide technical assistance to U.S. communities engaging in FEMA Hazard Mitigation Assistance & Planning Programs.

Survey URL: https://go.ncsu.edu/dta_survey

*To be eligible to participate, you must be 18 years of age or older, reside in the United States, and be currently employed by or have a professional affiliation with an institution of higher education (e.g. a 4-year university). Participation in this study is voluntary.



Then

WE WANT YOU!

...Reach out to us at:
ncsu-dta-support@ncsu.edu
to participate in the project.

Preliminary Information:
Name, E-mail, Website, etc.