

Design-Driven Innovation for Disaster Risk Reduction in Urban Spaces

Jorge León, Universidad Técnica Federico Santa María + CIGIDEN (Chile)

Larisa Ovalles, Urban Risk Lab, MIT

Paula Villagra, UACH (Chile)

Magdalena Vicuña, PUC (Chile)

Managing Disasters Now and Into the Future / Tuesday, July 15, 3:30 to 5:00 p.m. MDT

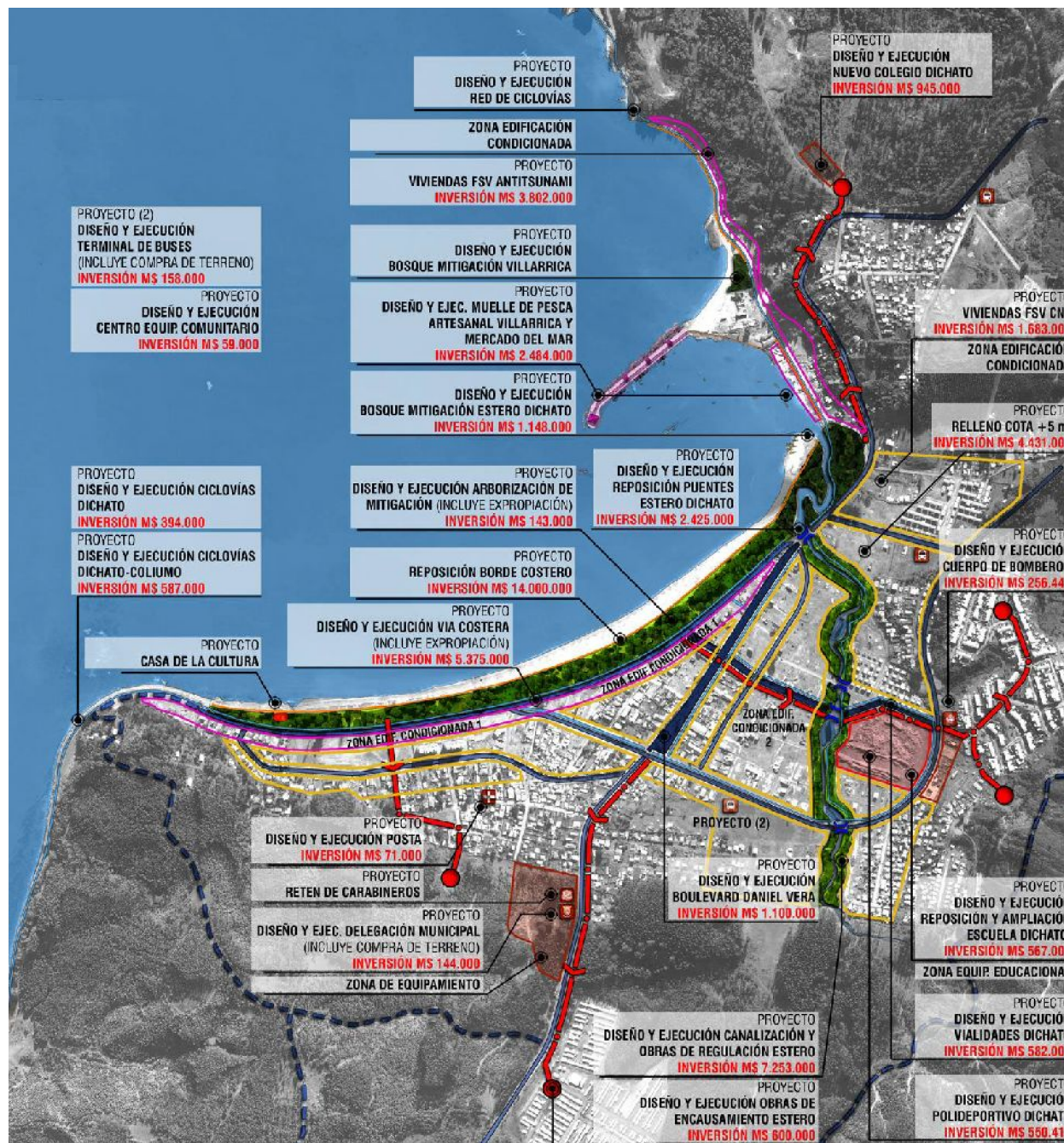


UNIVERSIDAD TECNICA
FEDERICO SANTA MARIA

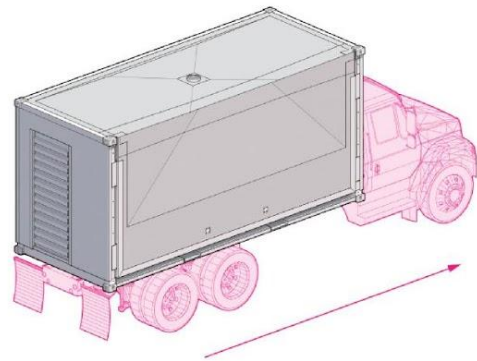


Cerro La Merced (2014)
Photo by Andrea Pino

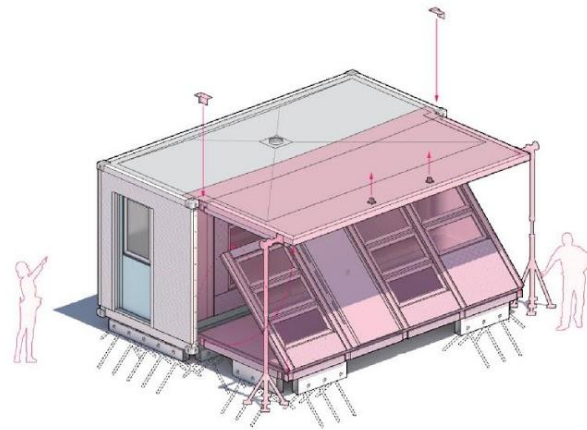




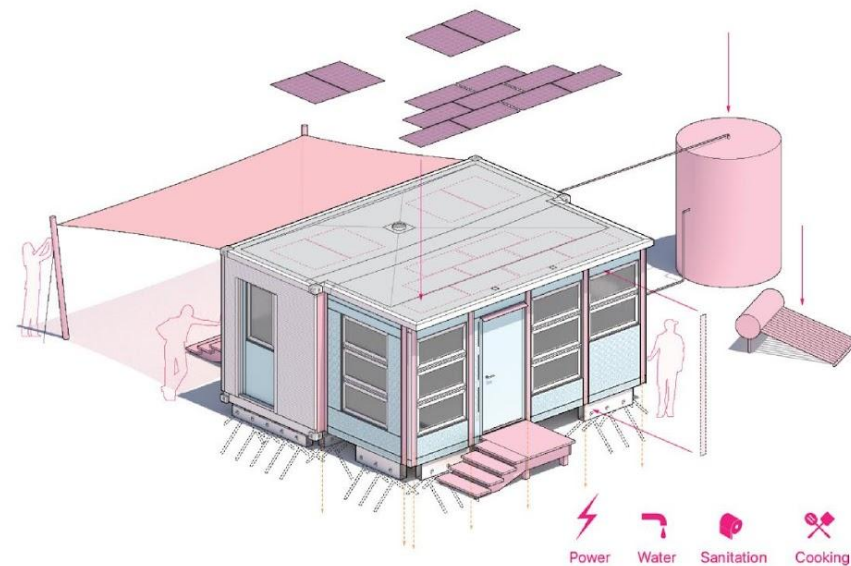
CONCEPT AND INSTALLATION PROCESS



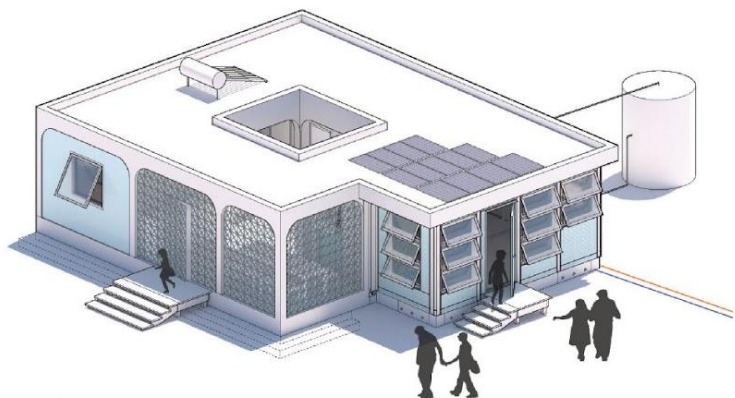
1. Flexible Shipping
as CSC certified
container



2. Rapid and Simple
Site Installation

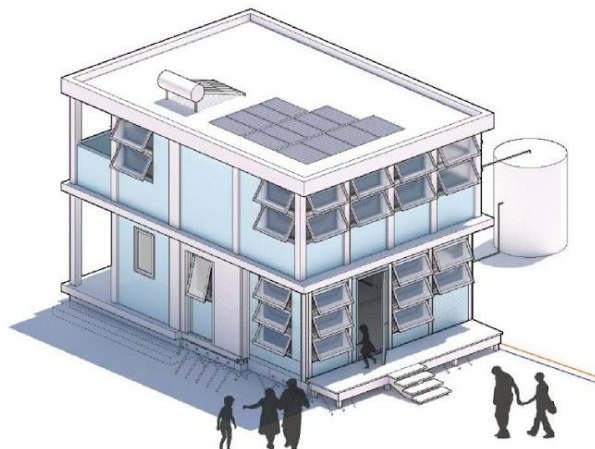


3. Safe and Secure Shelter +
Temporary Housing

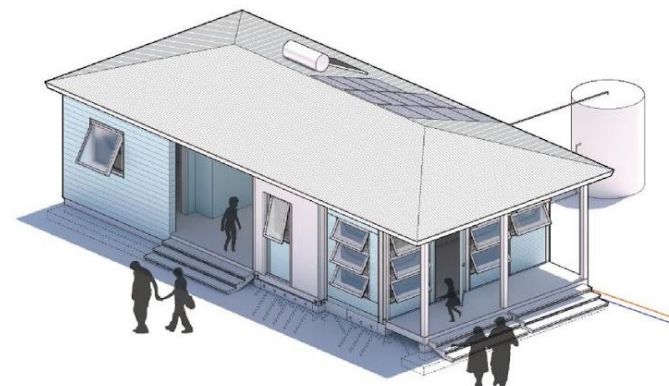


Courtyard

4. Flexible Permanent Expansions

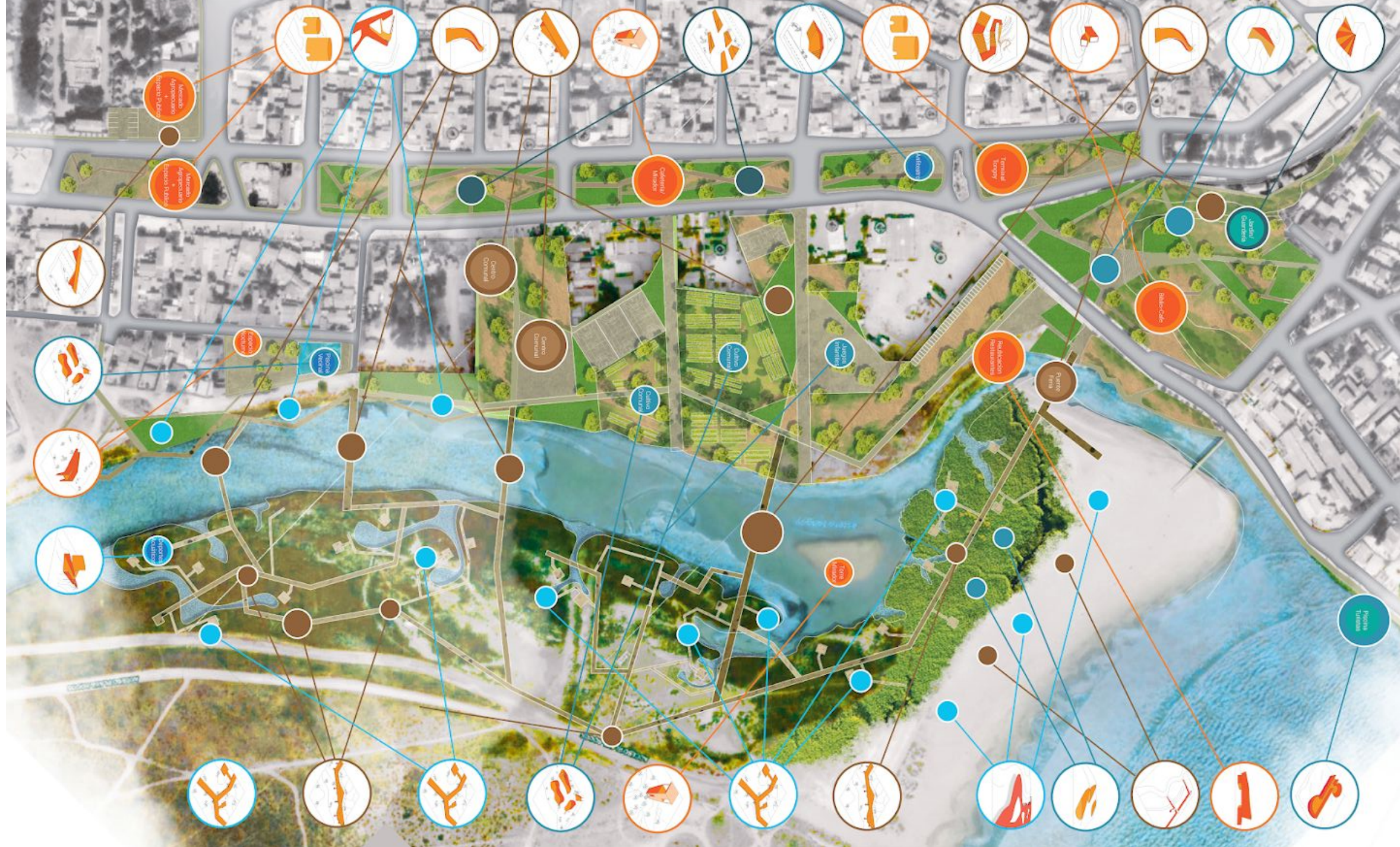


Compact two story



Dogtrot

URBAN SCALE



Guemil Icons for Emergencies

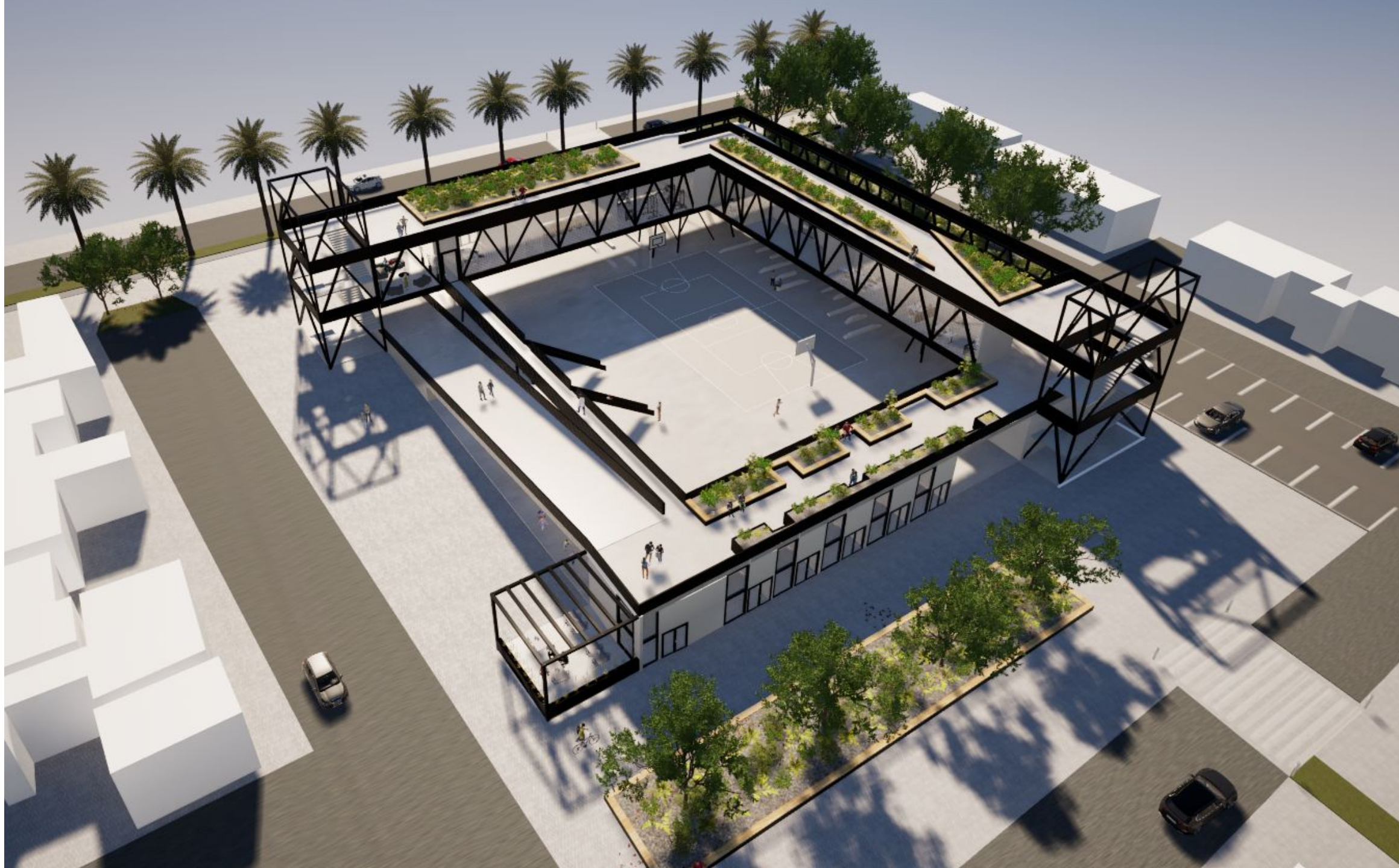


A visual system for emergency management.



RESPONSE

BUILDING SCALE



RING + *whistle*

ring + whistle

"Imagine getting trapped underneath building ruins after earthquake, or even walking alone at night, how would you signal others for rescue?"

A wearable ring design with embedded whistle function for sending emergency signals/ information.



MULTIPLE
HAZARDS



PROTECTION
& SAFETY

material:
silver, gold-plated silver



Use the whistle to
alert others of your
location in case of
an emergency



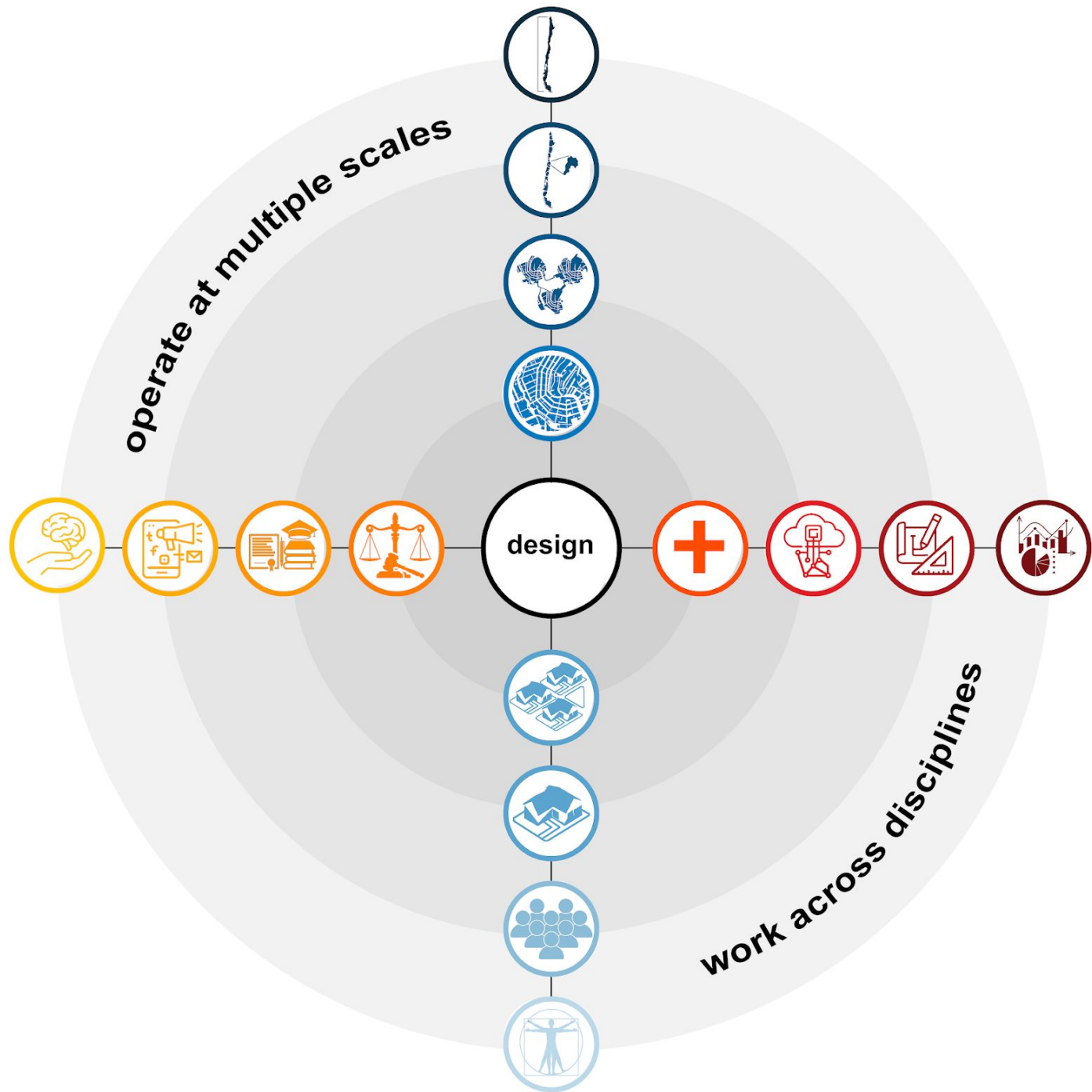
ring + whistle



ALERT/ COMMUNICATION



JEWELRY



Thank you.

jorge.leon@usm.cl