

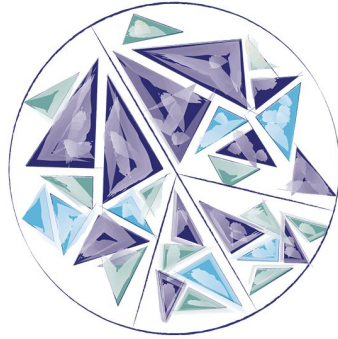


# **BUILDING PECE**

**Purposes, Functions, Experiments**

**Kim Fortun**

Department of Anthropology  
EcoGovLab, PECE Lab, AirUCI  
University of California Irvine

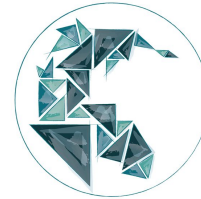


# PECE

Platform for Experimental and Collaborative Ethnography



## THE ASTHMA FILES



## Disaster STS Network



CENTER  
for  
ETHNOGRAPHY

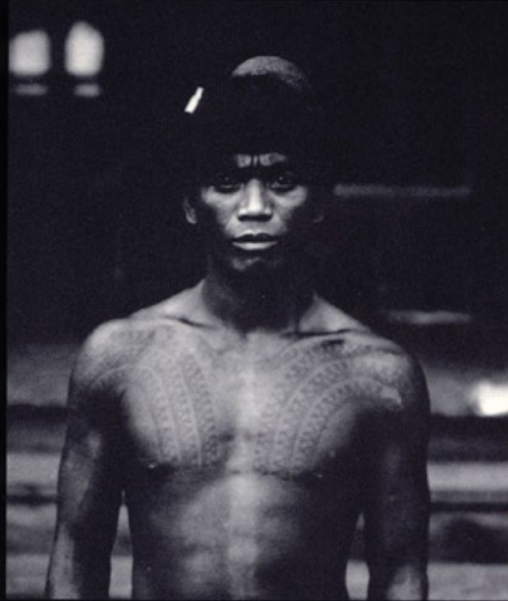


## WORLD PECE

# Anthropology as Cultural Critique

AN EXPERIMENTAL MOMENT  
IN THE HUMAN SCIENCES

George E. Marcus and Michael M. J. Fischer



IGOROT MAN: Brought from the Philippines for exhibition at the 1904 Saint Louis World's Fair.

*Second Edition*

# WRITING CULTURE

The Poetics And Politics Of Ethnography

edited by James Clifford and George E. Marcus

with a new foreword by KIM FORTUN



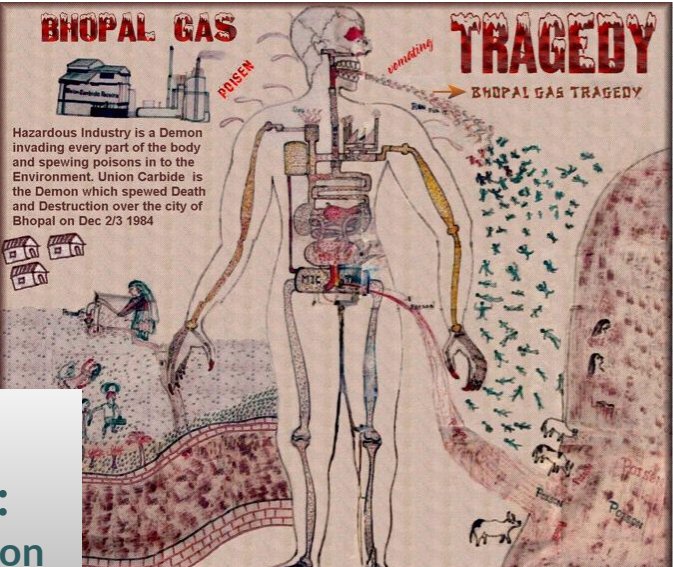
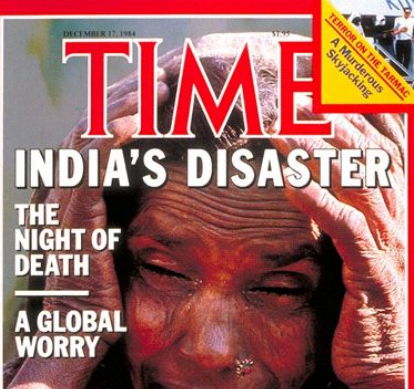
## RESEARCH BACKGROUND

text-attentive anthropology  
+ experimental ethnography,  
de-authorial, dialogically discursive turn

A School of American  
Research Advanced Seminar







The photos of the missing and presumed dead.

**RESEARCH BACKGROUND:**  
 aftermath of 1984 Union Carbide chemical plant disaster in Bhopal India

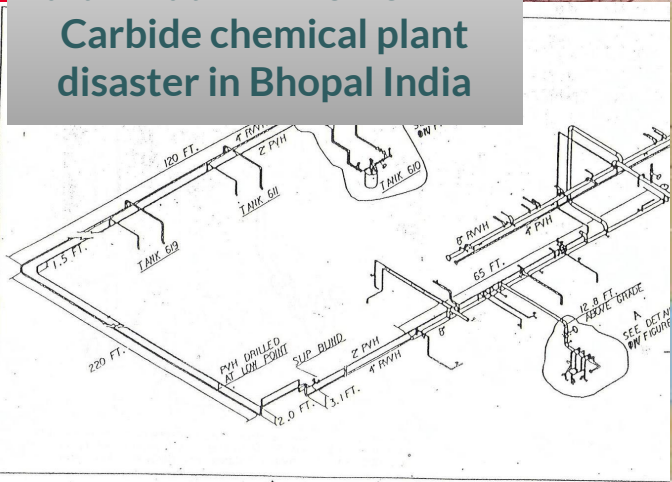
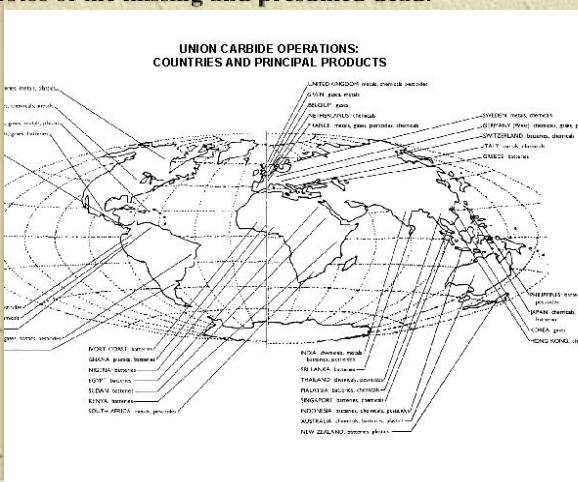
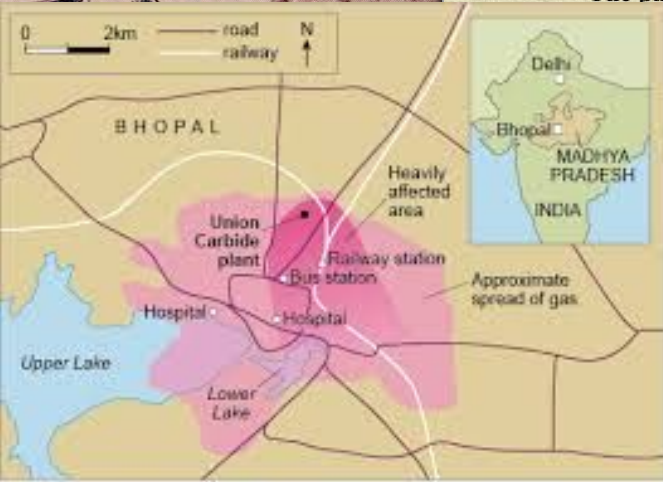


FIGURE 3. PVH AND RVVH PIPING CONFIGURATION







## RESEARCH BACKGROUND

frontline communities and  
environmental right-to-know in  
the United States

### 4. Houston, Texas

## Kids in Danger Zones

One in Three U.S. Schoolchildren at  
Risk from Chemical Catastrophes



## EnviroAtlas

EnviroAtlas Home

About Us

Ecosystem Services

Frequent Questions

Project Status

Web Apps

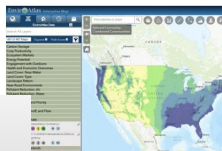
Interactive Map

## EnviroAtlas Interactive Map

This easy to use, interactive mapping application does not require any GIS skills to use and provides ready access to 500+ maps and multiple analysis tools.

### Need help getting started?

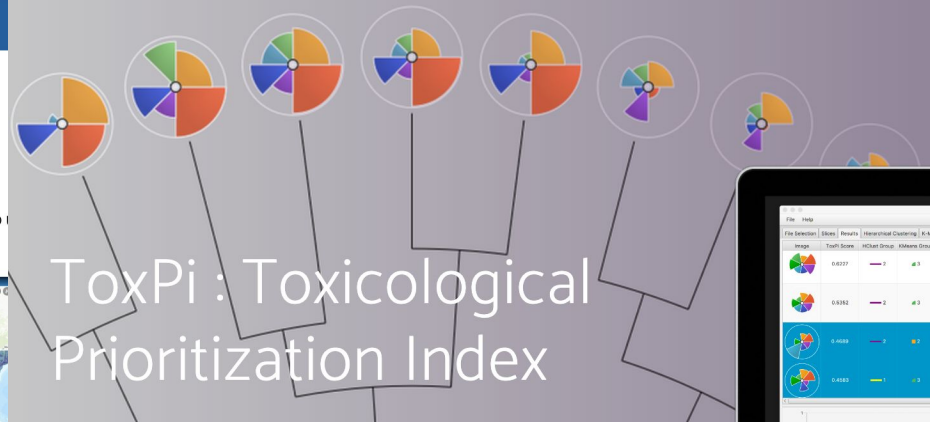
- [View tutorials for using the Interactive Map.](#)



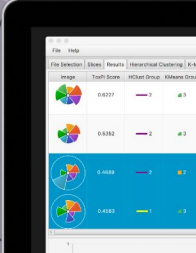
**RESEARCH  
BACKGROUND**  
the “informing” of  
government agencies and the  
environmental health sciences

## ToxPi

DOWNLOAD APPLICATIONS CITE REIF LAB



ToxPi : Toxicological  
Prioritization Index







**RESEARCH BACKGROUND**  
comparative studies of  
environmental health governance



# Environmental Health Governance in Six Cities

How Scientific Cultures, Practices and Infrastructure Shape Governance Styles







The photos of the missing and presumed dead.

The Disaster-STS Network links researchers from around the world working to understand, anticipate and respond to disaster, fast and slow. Current projects focus on Quotidian Anthropocenes, COVID-19 and Environmental Injustice....

From Bhopal to  
<https://disaster-sts-network.org/>

- concerns about data ownership and possibly extractive research relations
- concerns about security and protection of research subjects
- concerns about de-contextualization and misinterpretation of data
- concerns about malicious misuse of data
- concerns that data sharing expectations conflate anthropology with other sciences, fail to respect distinctive epistemic commitments
- requires technical infrastructure, service and skills that most anthropologists don't have
- requires research community coordination and new roles for scholarly societies and funders
- implies a profound cultural shift away from individualist, possessive, property-oriented research practice
- implicates research methods and design -- asking anthropologists to think conceptually and technically about data types and research work flows
- it is laborious, requiring time and financial support

## WHY WORRY ABOUT RESEARCH DATA SHARING ?

- prompts deep reflexivity and reconceptualization of anthropology's (variegated) epistemic commitments research designs, methods, data types, purposes and disciplinary culture
- other fields have been vitalized and gained stronger public presence through development of research infrastructure and transparency.
- an anthropology data commons could help level and extend access to anthropological practice and knowledge forms while deepening the data all anthropologists can work with (important in cross-site, cross-scale, cross-system studies many anthropologists now undertake)
- although reproducibility is not the index of rigour in cultural anthropology, discussion of how academic knowledge claims should be evaluated and legitimated remains vital -- refining how we articulate this for anthropology, "complying" with rising public, publisher and funder expectations.
- building, refining and sharpening our representations of anthropological data readies collaboration with researchers in other fields
- infrastructure and practices supporting data sharing also support collaboration *among* ethnographers, enabling "validation" while enriching interpretive possibilities.
- infrastructure and work flows supporting research data sharing also support new, non-commercial, genre-busting, data-enriched forms of scholarly publication and communication

# WHY SHARE RESEARCH DATA ANYWAY?





The George F. Kneller Endowment  
in Education and Anthropology

ON THE INTERNATIONALIZATION  
OF THE SOCIAL SCIENCES: A VIEW  
FROM THE SOUTH

Leandro Rodriguez Medina  
Department of International Relations and Political Science, UDLAP  
Editor-in-Chief, Tapuya: Latin American Science, Technology and Society

February 1st, 2018  
University of California Los Angeles

Screenshot

### NETWORKS OF/FOR INTERNATIONALIZATION

**Strategic networks**

Strategic networks are made of actors (humans and non-humans) concerned with meeting national and international indicators and standards for internationalization (co-authorship, international research teams, international funding, dual degrees, etc.). They have a de-politicized view of the academic world

**Transcendental networks**

Transcendental networks have actors (humans and non-humans) interested in achieving socio-economic and political goals for which international connections are perceived as necessary or desirable

↓

Thus, careers are shaped by networks, which in turn are based on (a) individual interests, (b) institutional regulations, (c) national policies, (d) in trends.

Screenshot

Around 90% of journals are published in the North—something that has not changed in the last 30 years.

**Table 1. Geographical origins of social sciences journals.\***

Journals	1980–1989		1990–1999		2000–2009	
North America	375	49.7%	399	48.5%	398	36.5%
Europe	308	40.8%	365	44.4%	561	51.5%
Asia	31	4.1%	21	2.6%	46	4.2%
Oceania	17	2.3%	17	2.1%	27	2.5%
International	12	1.6%	10	1.2%	11	1.0%
Latin America	8	1.1%	5	0.6%	31	2.8%
Africa	3	0.4%	4	0.5%	12	1.1%
CIS	1	0.1%	1	0.1%	3	0.3%

\*The geographical origin of a journal is identified through the location of its publisher. From the ISSN database, we identified 15 international journals over the whole period (containing about 1% of social sciences articles). There are also 78 journals with 'international' in their title, but which are not classified as 'international' in ISSN. These 78 journals are distributed substantially in the same manner as other journals with regard to the continent where their publisher is located.

Screenshot

Europeans cite Europeans, North-Americans cite North-Americans... and Latin Americans cite Euro-Americans

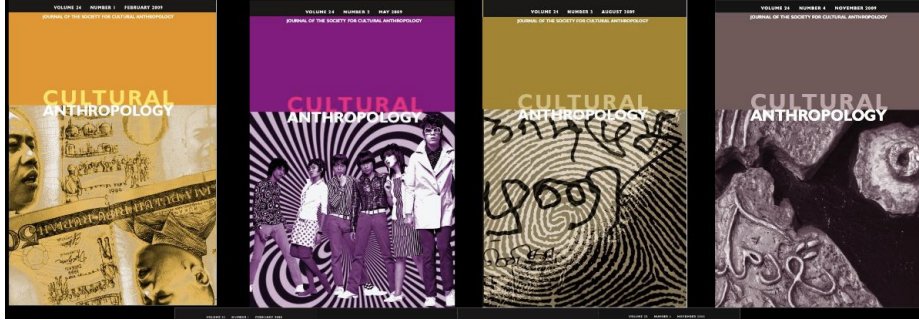
**Table 4.4 > Origins of citations by region for the 200 most-cited journals**

Citing regions	Africa		Latin America		Asia		CIS		Europe		Oceania		North America	
	% 1993-1995	% 2003-2005	% 1993-1995	% 2003-2005	% 1993-1995	% 2003-2005	% 1993-1995	% 2003-2005	% 1993-1995	% 2003-2005	% 1993-1995	% 2003-2005	% 1993-1995	% 2003-2005
Africa	22	11.7	0	0.4	0	0.2	0.2	0	0	0	0	0	0	0
Asia	0.4	0.8	0.5	0.3	6.8	1.6	1.2	1	0.3	0.2	0	0.2	0	0
CIS	0	0	0	0	0	0	36.7	15.3	0	0	0	0	0	0
Europe	45.4	53.4	32.1	33.9	31.2	41.8	30.9	31.9	51.1	50.3	35.9	42.7	17.6	20.4
International	5.2	3.1	1.7	2.1	3.6	2.3	0.3	0.2	1.7	1.3	2.4	1.7	1.6	1.4
Latin America	0	0	11.7	6.9	0.2	0	0	0	0	0	0	0	0	0.2
Oceania	0.3	0.2	0.4	0.4	0	0	0	0	0.5	0.3	12.9	7.2	0	0
North America	26.7	30.9	51.6	56.7	58.2	54.1	30.8	51.5	46.3	47.9	48.8	48.1	80.8	78.1
Capture rate	48.3	50.7	47.8	43.9	45.9	45.5	55.1	48.1	41.1	41.9	40.1	39.1	45.8	45.5

Notes:  
1. This table should be read as follows: for example (top left), restricted to the 200 most-cited journals in African social sciences articles, 22 per cent of the references in the period 1993–1995 come from African social sciences journals.  
2. The 'capture rate' measures the percentage of the total number of references in the 200 most-cited journals.

Screenshot

# PECE Politics



# THE ASTHMA FILES

**RPI**

## Tetherless World Constellation

The Tetherless World Constellation (TWC) at Rensselaer Polytechnic Institute (RPI) is a multidisciplinary research institution that focuses on the study of theories, methods and applications of the World Wide Web within three inter-connected themes or "Constellations": Future Web, Semantic Foundations and Xinformatics. TWC aims to make the next generation of the Web usable and responsive to the growing variety of policy, educational, societal and scientific needs.

### FEATURED PROJECTS

- [HEALS \(Health Empowerment by Analytics, Learning and Semantics\)](#)



*Jim Hendler, TWC Co-chair, Deborah McGuiness, TWC*

Building the social and technical bridges to enable open sharing and re-use of data

RDA EU RDA US CONTACT US LOGIN REGISTRATION

**RDA** RESEARCH DATA ALLIANCE

**O&A Members** 61  
Active Organisational & Affiliate members

**MEMBERSHIP** Members: 11736  
Becoming a member of RDA is simple and open to both individuals and organizations  
[Register now](#)

**RDA Groups** WG & IIGs: 95  
Discover what RDA Working and Interest Groups and all other Groups are up to and find out how to join them. [Explore Groups](#)

ABOUT RDA GET INVOLVED GROUPS RECOMMENDATIONS & OUTPUTS RDA FOR DISCIPLINES PLENARIES & EVENTS NEWS & MEDIA

## Working Groups

[Home](#) » [Groups](#) » [Working Groups](#)

Group Title	Chair(s)
Agrisemantics WG	brandon whitehead, Caterina Caracciolo, Sophie Aubin
Blockchain Applications in Health WG	Edwin Morley-Fletcher, Ludovica Durst
Brokering Framework Working Group	Wim HUGO, Michael Diepenbroek, Jay Pearلمان, Stefano Natvi
Capacity Development for Agriculture Data WG	Suchith Anand, Chipso Msengezi, Karna Wegner
CURE-FAIR WG	Limor Peer, Florio Arguillas, Thu-Mai Christian, Tom Honeyman
Data Citation WG	Andreas Rauber, Mark Parsons
Data Description Registry Interoperability (DDRi) WG	Amir Ariyan, Adrian Burton, Brigitte Hausstein
Data Granularity WG	Katherine McNeill, Reyna Jenkyns, Brigitte Mathiak
Data Type Registries WG & #2	Larry Lannom, Tobias Weigel
Data Usage Metrics WG	Daniella Lowenberg, Ian Bruno
Data Versioning WG	Jens Klump, Lesley Wyborn, Mingfang Wu, Kirsten Elger
Discipline-specific Guidance for Data Management Plans WG	Daniela Hausen, Briana Ezray, Jessica Hrudey, Holly Murray, Shannon Sheridan, Ivonne Anders, Yasemin Turkylimazvan der Velden, Santosh Ilamparuthi

- Creating and Managing RDA Groups
- Creating or Joining an RDA Working Group
  - WG Case Statement Process
  - Creating or Joining a Community of Practice
  - Creating or Joining an RDA Interest Group
  - Group Chairs: Roles and Responsibilities
  - Birds of a Feather
  - All Groups
  - [Working Groups](#)
  - [Interest Groups](#)
  - [Historical Groups](#)
  - [Coordination Groups](#)
  - [National Groups](#)
  - [Communities of Practice](#)

### Next Event

**RDA17 Plenary session:**  
**Establishing a Sensitive Data Interest Group**

Hi all,

# PECE BEGINNINGS





## ABOUT

- ABOUT
- PROJECTS
- PEOPLE
- SUBSTANTIVE LOGIC



HAUNTOLOGY



CROSSING SCALES, WORKING DOUBLE BINDS



EXPLANATORY PLURALISM



JUXTAPOSITIONAL LOGICS



PURSUING DIFFERENTIAL REPRODUCTION



SCRUFFIE CONTOURS AND BLURRED FOCUS



TRANSMUTING AMBIVALENCES OF MEANING



VALUING NOISE

## ABOUT

- View
- Edit

- ABOUT
- PROJECTS
- PEOPLE
- DESIGN LOGICS



ALT-ONTOLOGY



CROSSING SCALES, WORKING DOUBLE BINDS



EXPLANATORY PLURALISM



JUXTAPOSITIONAL LOGICS



PURSUING DIFFERENTIAL REPRODUCTION



SCRUFFIE CONTOURS AND BLURRED FOCUS



TRANSMUTING AMBIVALENCES OF MEANING

## ABOUT

- ABOUT
- PROJECTS
- PEOPLE
- SUBSTANTIVE LOGIC



ALT-ONTOLOGY



CROSSING SCALES, WORKING DOUBLE BINDS



EXPLANATORY PLURALISM



JUXTAPOSITIONAL LOGICS



PURSUING DIFFERENTIAL REPRODUCTION



SCRUFFIE CONTOURS AND BLURRED FOCUS



TRANSMUTING AMBIVALENCES OF MEANING



VALUING NOISE

## ABOUT

- ABOUT
- PROJECTS
- PEOPLE
- DESIGN LOGICS



ALT-ONTOLOGY



CROSSING SCALES, WORKING DOUBLE BINDS



EXPLANATORY PLURALISM



JUXTAPOSITIONAL LOGICS



PURSUING DIFFERENTIAL REPRODUCTION



SCRUFFIE CONTOURS AND BLURRED FOCUS



TRANSMUTING AMBIVALENCES OF MEANING

## ABOUT

- View
- Edit

- ABOUT
- PROJECTS
- ABOUT PECE
- PEOPLE
- S



HAUNTOLOGY



CROSSING SCALES, WORKING DOUBLE BINDS



EXPLANATORY PLURALISM



JUXTAPOSITIONAL LOGICS



PURSUING DIFFERENTIAL REPRODUCTION



SCRUFFIE CONTOURS AND BLURRED FOCUS

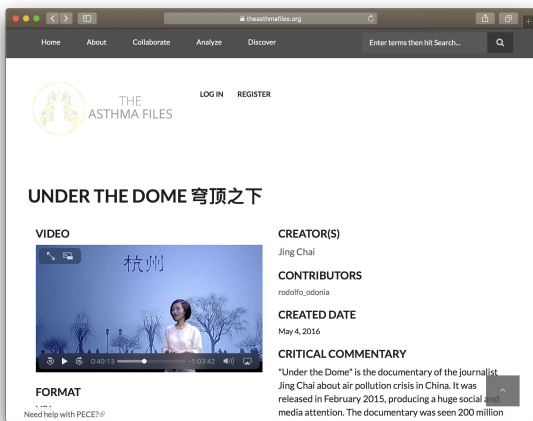


TRANSMUTING AMBIVALENCES OF MEANING

# PECE TRAVELS (with design logics)

# PECE AS TRIPTYCH

## ARCHIVING



Home About Collaborate Analyze Discover Enter terms then hit Search...

THE ASTHMA FILES LOGIN REGISTER

### UNDER THE DOME 穹顶之下

**VIDEO**

**CREATOR(S)**  
Jing Chai

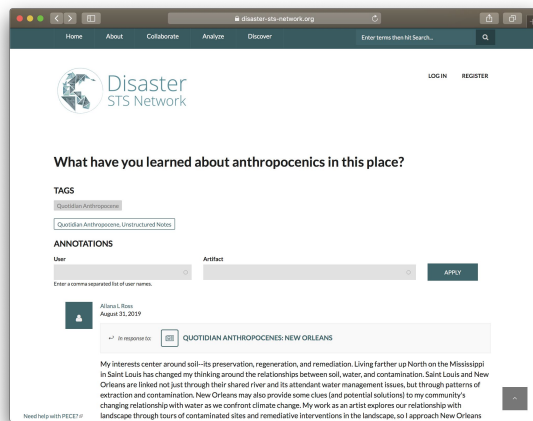
**CONTRIBUTORS**  
rodolfo\_odonio

**CREATED DATE**  
May 4, 2016

**CRITICAL COMMENTARY**  
"Under the Dome" is the documentary of the journalist Jing Chai about air pollution crisis in China. It was released in February 2015, producing a huge social media attention. The documentary was seen 200 million times.

**FORMAT**  
Need help with PECE? #

## ANALYZING



Home About Collaborate Analyze Discover Enter terms then hit Search...

Disaster STS Network LOGIN REGISTER

### What have you learned about anthropocenes in this place?

**TAGS**  
Quotidian Anthropocenes, Unsettled Land Notes

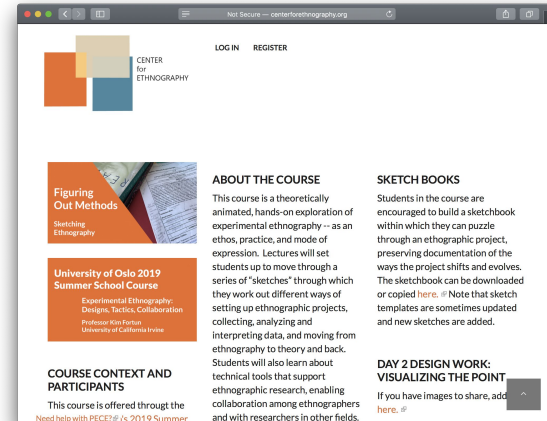
**ANNOTATIONS**

User	Artifact
Alison Liles August 31, 2019	QUOTIDIAN ANTHROPOGENES: NEW ORLEANS

My interests center around soil—its preservation, regeneration, and remediation. Living farther up North on the Mississippi in Saint Louis has changed my thinking around the relationships between soil, water, and contamination. Saint Louis and New Orleans are linked not just through their shared river and its attendant water management issues, but through patterns of extraction and contamination. New Orleans may also provide some clues (and potential solutions) to my community's changing relationship with water as we confront climate change. My work as an artist explores our relationship with landscape through tours of contaminated sites and remedial interventions in the landscape, so I approach New Orleans

Need help with PECE? #

## PUBLISHING



Home About Collaborate Analyze Discover Enter terms then hit Search...

CENTER for ETHNOGRAPHY LOGIN REGISTER

### Figuring Out Methods

Sketching Ethnography

**University of Oslo 2019 Summer School Course**  
Experimental Ethnography: Design, Textile, Collaboration  
Professor Kim Fortun  
University of California Irvine

**ABOUT THE COURSE**  
This course is a theoretically animated, hands-on exploration of experimental ethnography -- as an ethos, practice, and mode of expression. Lectures will set students up to move through a series of "sketches" through which they work out different ways of setting up ethnographic projects, collecting, analyzing and interpreting data, and moving from ethnography to theory and back. Students will also learn about technical tools that support ethnographic research, enabling collaboration among ethnographers and with researchers in other fields.

**SKETCH BOOKS**  
Students in the course are encouraged to build a sketchbook within which they can puzzle through an ethnographic project, preserving documentation of the ways the project shifts and evolves. The sketchbook can be downloaded or copied here. \*Note that sketch templates are sometimes updated and new sketches are added.

**COURSE CONTEXT AND PARTICIPANTS**  
This course is offered through the Need help with PECE? # /s, 2019 Summer

**DAY 2 DESIGN WORK: VISUALIZING THE POINT**  
If you have images to share, add here. #

# PECE as Triptych: ARCHIVING



MY ACCOUNT DASHBOARD LOG OUT

## DASHBOARD

GROUPS	PROJECTS	ARTIFACTS	MEMOS	ANNOTATED ARTIFACTS	ANNOTATIONS	
ANALYTICS	TAB 8	FIELD DIARY	TAB 10	PECE ESSAYS	PHOTO ESSAYS	TIMELINE ESSAYS

4S 2023 paraconference x Environmental Injustice: Building a Global Record Project

Archiving Formosa Plastics

Atomic America

Austin, USA Anthropocenes

Bhopal

California at Risk

## ADD CONTENT

- Analytic
- Artifacts
- Audio
- Bundle
- Fieldnote
- Image
- PDF Document
- Tabular Data
- Text
- Video
- Website
- Fieldsite
- Group
- Memo
- PECE Essay
- Photo Essay
- Project
- Substantive Logic
- Timeline Essay
- Zotero Feed

## PROJECT PORTAL: ENVIRONMENTAL INJUSTICE GLOBAL RECORD



## PROJECTS

EJ GLOBAL RECORD: SANTA ANA, CALIFORNIA, USA



VIEW ESSAY

EJ GLOBAL RECORD: AUSTIN, TEXAS



VIEW ESSAY

EJ GLOBAL RECORD: SAN GABRIEL VALLEY, USA



VIEW ESSAY

EJ GLOBAL RECORD: KAOHSIUNG, TAIWAN



VIEW ESSAY

EJ GLOBAL RECORD: NAVAJO NATION (DINE BIKEYAH), USA



VIEW ESSAY

EJ GLOBAL RECORD: BUNUN TRAILMAKING



VIEW ESSAY

EJ GLOBAL RECORD: SOUTH KOREA



VIEW ESSAY

SAMPSON COUNTY, NORTH CAROLINA



VIEW ESSAY



- **Data characterization and types**
  - Text, Images, Audio, Video, CSV tables, Data Bundles with metadata and annotations.
- **Data consent and ownership**
  - Archived consent forms and deeds of gift
- **Data security and privacy protection**
  - Customized Drupal permissions + encryption
- **Permissions and access (fine grained and changeable)**
  - User Roles: anonymous, contributors, research + Groups: open, restricted, private
- **Data analysis, frameworks, and tools**
  - PECE is designed for this!
- **Data preservation**
  - Local, almost-best-practice solutions, sustainability plan in development
- **Data licensing and attribution**
  - Various (good) licensing options, preference toward creative commons. Any data on PECE can be assigned an ARK (Archival Resource Key).
- **Data discoverability and metadata**
  - Good and working on better.
- **Data interoperability, portability and APIs**
  - API developed to be deployed or move to Drupal 9

# PECE FOR DATA MANAGEMENT

# PECE as Triptych: ANALYZING

Disaster STS Network This analytic framework will be used to draw out and compare different articulations of

**Annotating a climate policy**  
This structured analytic is designed for analyzing planning and policy documents that a

**Annotating a Film**

**Annotating a Government or NGO Report**

**Annotating a Health or Epidemiological Study**

**Annotating a News Article**

**Annotating a Policy**

**Annotating a Research Article**

## EIJ DATA RESOURCE ANALYSIS

View Order nodes Edit

What is this data resource called and how should it be cited?

Submitted by Kim Fortun on February 7, 2022 - 3:28pm

Who makes this data available and what is their mission?

Submitted by Kim Fortun on February 7, 2022 - 3:28pm

What data is drawn into the data resource and where does it come from?

Submitted by Kim Fortun on February 7, 2022 - 3:29pm

How scales (county, regional, neighborhood, census tract) can be seen through this data resource?

Submitted by Kim Fortun on February 7, 2022 - 3:30pm

What can be demonstrated or interpreted with this data set?

Submitted by Kim Fortun on February 7, 2022 - 3:30pm

What visualizations can be produced with this data resource and what can they be used to demonstrate?

Submitted by Kim Fortun on February 7, 2022 - 3:31pm

How has this data resource been used in research and advocacy?

Submitted by Kim Fortun on February 7, 2022 - 3:32pm

How has this data resource been critiqued or acknowledged to be limited?

Submitted by Kim Fortun on February 7, 2022 - 3:32pm

## What can be demonstrated or interpreted with this data set?

View Edit Customize display Preserve links now

EIJ Data Resource Analysis

Move up in EIJ Data Resource Analysis Move down in EIJ Data Resource Analysis

### ANNOTATIONS

User Artifact APPLY

Enter a comma separated list of user names.

Brenda Vuong  
March 17, 2022  
in response to California Open Data Portal

Cal Open Data Portal demonstrates that it is able to bring together different datasets from various government agencies. It also allows for open data to be linked across different existing datasets.

Edit Annotation

Margaux Fisher  
February 28, 2022  
in response to California Student Health Index

The Student Health Index enables users to identify where SBHCs will have the most impact for students. The index uses 12 indicators, each of which can be scored from 1 to 4 for any given school. These scores are generated using percentiles and represent relative values. The 12 indicator scores are combined into a Need Score, which is calculated using percentiles along a scale of 1 to 4. Schools with a score of 4 (in the 4th quartile) have the highest Need scores relative to other schools in California.

The index is composed of 12 diverse indicators (percentages, rates, and index values) that have been transformed using percentiles in order to enable comparisons on a common scale. These indicators are divided into 3 categories: health indicators, school-level indicators, and socioeconomic indicators.

## PROJECT PORTAL: ENVIRONMENTAL INJUSTICE GLOBAL RECORD



### PROJECTS

EJ GLOBAL RECORD: SANTA ANA, CALIFORNIA, USA



VIEW ESSAY

EJ GLOBAL RECORD: AUSTIN, TEXAS



VIEW ESSAY

EJ GLOBAL RECORD: SAN GABRIEL VALLEY, USA



VIEW ESSAY

EJ GLOBAL RECORD: KAOHSIUNG, TAIWAN



VIEW ESSAY

EJ GLOBAL RECORD: NAVAJO NATION (DINÉ BIKEYAH), USA



VIEW ESSAY

EJ GLOBAL RECORD: BUNUN TRAILMAKING



VIEW ESSAY

EJ GLOBAL RECORD: SOUTH KOREA



VIEW ESSAY

SAMPSON COUNTY, NORTH CAROLINA



VIEW ESSAY

## EIJ CALIFORNIA SANTA ANA RESEARCH GROUP

View Edit Group Revisions Customize display Preserve links now

DESCRIPTION TAB 2 PARENT GROUPS ARTIFACTS TAB 5 FIELD DIARY ESSAYS

Wednesday, April 5, 2023 - 1:09pm

Community forum about the role and impact of the industrial corridor on soil contamination, air pollution, and the health of the community

Leonel is presenting on things that Dr.

(...)

Thursday, March 23, 2023 - 1:47pm

Attended the EJ fireside chat focusing on an air quality initiative in Grand Rapids Michigan on 3/23/23. Panelists

Moderator: Tiffany Werner@ Environmental Project Manager at Clarity

Darren Riley@ Co-Founder & CEO JustAir Solutions@

Kareem Scales@ Co-Chair Community Collaboration on Climate Change@ (C4) (...)

Monday, March 20, 2023 - 12:53pm

Today is Monday (Finals week 2023 winter quarter). This quarter, I had to learn how to balance a heavy work load. It was very challenging for me. I finished inputting artifacts, zotero items in the Hacienda Heights folder and the Santa Ana folder. I was able to upload some audio of Orlando Camacho's interview for MNPA-GREEN! am starting to learn what it takes to make change in the world. I will continue to learn how to connect groups from different areas. A person (or in this case a "company") can no longer lie if everyone is aware of the lies. I do believe that a lot of people are unaware of what is going on around them. (...)

Monday, March 20, 2023 - 3:18am

AB617 meetingSouth LA March 9th 2023Asking community members about stories in south LA (SLA) and any initiatives they are takingUpdates by Martha Dino Arguello: Talks about the area in SLA. Monica's cleaners to be converted to wet cleaning. Money from a private donor. Took 20 yrs to implement since Martha's time at SCAQMDRuth Andrade: mentioned how citizens did not know the health causes were caused by envt issues (...)

Friday, March 17, 2023 - 6:20pm

James' Notes from AQMD meeting with Arlene Farol Saria and Ricardo Rivera: Arlene: First step of AB617 is Community identification. We take our workshop on the road. Applications can be sent by an individual, city, community org. Fill out a form, self recommendation form. General AB617 webpage, community presentation that they take out to their communities. (...)

Thursday, March 16, 2023 - 12:47am

Event: EcoGovLab meeting with Jill Harrison and Jill Harrison's 'From the Inside Out' talk at UCI LawDate: 3-9-2023Location: SBSG windowless conference room/UCI Law School Speaker: Jill Harrison, Associate Professor, University of Colorado Boulder, Jill Lindsey Harrison | Geography | University of Colorado Boulder@ (...)

Tuesday, March 14, 2023 - 12:58pm

Maya is a science organizer with the Orange County Environmental Justice non-profit organization that focuses on low-income communities in the county that are exposed to pollutants more than

## EIJ CALIFORNIA SANTA ANA RESEARCH GROUP

View Edit Group Revisions Customize display Preserve links now

DESCRIPTION TAB 2 PARENT GROUPS ARTIFACTS TAB 5 FIELD DIARY ESSAYS

CHARACTERIZING PFAS IN SANTA ANA

ZOTERO BIBLIOGRAPHY-SUKRITI KAPUR

RECAP VIDEO OF DTSC MEETING IN HACIENDA HEIGHTS (2-8-23)

WHO TO CALL - HOMELESS RESOURCES AND SERVICES

FLOOD CHANNEL JURISDICTION FLYER - SANTA ANA

YOU ARE THE GROUP MANAGER



EIJ CALIFORNIA SANTA ANA RESEARCH GROUP MEMBERS

GROUP OWNERS



KIM FORTUN



KAREN VALLADARES



SUKRITI KAPUR



JEREMY WAKEEN



KASEY EDWARDS



MARGAUX FISHER



SIERRA HOWARD



ABRAHAM DURAN-DIAZ



SHANNON COTTON



JAMES ADAMS



JOSEPH RAUL TRINIDAD

YOU ARE THE GROUP MANAGER



EIJ CALIFORNIA SANTA ANA RESEARCH GROUP MEMBERS

GROUP OWNERS



KIM FORTUN



KAREN VALLADARES



SUKRITI KAPUR

## EIJ CALIFORNIA SANTA ANA RESEARCH GROUP

View Edit Group Revisions Customize display Preserve links now

DESCRIPTION TAB 2 PARENT GROUPS ARTIFACTS TAB 5 FIELD DIARY ESSAYS

ECOCOVLAB TALKS WITH SANTA ANA, FOCUSING ON LEAD

ECOCOVLAB TALKS WITH SANTA ANA

LEAD POLLUTION DATA AND ADVOCACY RESOURCES (SANTA ANA, CALIFORNIA)

VIEW ESSAY

EIJ GLOBAL RECORD #45 PANEL

SANTA ANA FEDERAL RISK MANAGEMENT PLAN (RMP) FACILITIES OVERVIEW

YOU ARE THE GROUP MANAGER



EIJ CALIFORNIA SANTA ANA RESEARCH GROUP MEMBERS

GROUP OWNERS



KIM FORTUN



KAREN VALLADARES



SUKRITI KAPUR

# PECE & COLLABORATIVE ANALYSIS

## 0 READING PECE PLATFORMS|PROJECTS

View Order nodes Edit

Who are the stakeholders in this platform? What differences of interests and perspective are likely to be in play? What publics/networks/communities does or could the platform interface with?

Submitted by Kim Fortun on March 9, 2021 - 10:46am

What are the substantive logics of the platform (and are they visible)?

Submitted by Kim Fortun on March 9, 2021 - 10:55am

Who are likely and hoped for users of this platform?

Submitted by Kim Fortun on March 9, 2021 - 10:46am

What tactics are used by this platform's designers to produce reflective critique of the platform's design and operation?

Submitted by Kim Fortun on March 9, 2021 - 10:56am

Does this platform aspire to create a public (following John Dewey's arguments about the need to provoke publics into existence)?

Submitted by Kim Fortun on March 9, 2021 - 10:47am

How does the platform|project|archive realize PECE's design logics?

Submitted by Kim Fortun on March 22, 2021 - 11:13am

What types of data does the platform include and why? How is data presented and how are users encouraged to interact with the data?

Submitted by Kim Fortun on March 9, 2021 - 10:47am

Open commentary on PECE platforms|projects

Submitted by Kim Fortun on March 22, 2021 - 11:19am

What practices and tasks is the platform designed to support? Are workflows meant to be linear and efficient or exploratory and experiential?

Submitted by Kim Fortun on March 9, 2021 - 10:48am

# 0 Reading PECE Platforms|Projects

This analytic was developed to guide critical readings of PECE platforms and projects by their designers then by external reviewers. The latter are asked to do an "elaborative review." Annotations should be titled to show both the position and name of the reviewer. PD can be used to indicate that a reviewer is in the platform or project design group. ExR can be used to indicate an external reviewer. Like this: PD AKenner: title. Or: ExR KFortun: title. Annotations can be attached to the image artifact that ports to the platform or project here: <https://worldpece.org/content/pece-projects-0/essay>.



Does this platform aspire to create a public (following John Dewey's arguments about the need to provoke publics into existence)?

View Edit Customer profile Report this content

Showing PECE Platforms|Projects

View all 0 Reading PECE Platforms|Projects

### ANNOTATIONS

User:  Author:

Enter a comment or post to your notes.



Feb 27, 2021

Annotations  PECE Project Review (Porosus Plastics Global Archive)

The need to create a public has been an argument we've made in PECE discussion, adjacent research projects and some of the writing about the archive. What is needed for the public sphere and how the Porosus Public is both understood by corporate interest but also resistant in terms of infrastructure and transactional links.

I have not had adequate language to talk to activists about this framing - I'm actually not sure whether people identify as part of a "Porosus Public Community" (hoping that the public needs to be generated from outside also uses the idea of discarding the work that has been happening already in meetings, like listen for moments of disconnection, including something from creating their own feedback regarding each one of them. Some trends in language and some of concepts include writing about formless environmental racism in the US (know that the term has been perished in Taiwan, but are looking for new language). Especially in today's moment, I would have more on the self-identification of those who think are part of a global Porosus Public community for what we've somewhat cheekily called a public (not a "I").



Feb 22, 2021

Annotations  The Omega Rights Project

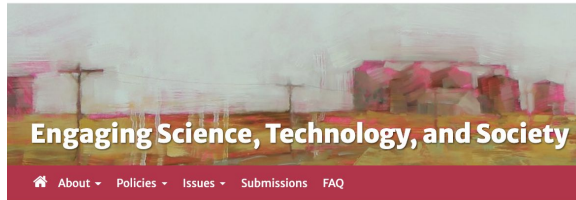
When I launched this project in 2018, and began in 2019, I actually think I followed myself for how to anything as grand as creating a public. Especially because, my experience working in PhD fields, people need jobs and easy access to information, the best personal experience possible, and PECE is being a barrier to public use, in my opinion. That means public use needs to be very intentionally designed to be easy. One way we've been doing this is with the slider on the home page. Or, by providing direct links to pages instead of just the back to the platform.

I would say on March 12, 2021, yes, we aspire to create a public using the platform, however, that's a project unto itself that we are.

# ANALYZING PECE PROJECTS & PLATFORMS



# PECE as Triptych: PUBLISHING

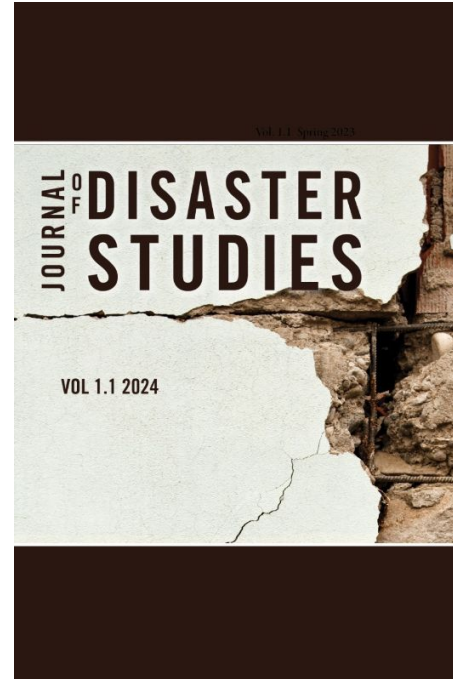


**Vol. 7 No. 2 (2021)**

## **Editorials**

### **Publishing ESTS**

ESTS Editorial Collective; Aalok Khandekar; Noela Invernizzi; Duygu Kaşdoğan; Ali Kenner; Angela Okune; Grant Ots  
Sujatha Raman, Amanda Windle, Emily York



## FORMOSA PLASTICS GLOBAL ARCHIVE

### 台灣塑膠檔案館



Collage by Anna Berti Suman ## (Sensjus Project), Paul Jobin ##, Hannah Chalew ## and Hai Le.

## OVERVIEW

The Formosa Plastics Global Archive supports a transnational network of people concerned about the operations of the Formosa Plastics Corporation, one of the world's largest petrochemical companies.

The material includes public coverage of Formosa Plastics, as well as documentation collected by activists over many years of work.

台塑集團工業區對環境、健康與社會之長期影響，北美、東亞、東南亞行動者皆蒐集豐富資料。然在缺乏完善資訊整合平台下，資料與經驗難以流通廣傳。本檔案館之目的，在於建置公共資訊平台、彙整累積相關資訊、促進跨國比較研究、公眾教育與行動串連。

## PLACES

### CALHOUN COUNTY, TEXAS, USA



VIEW ESSAY

### YILAN COUNTY, TAIWAN



VIEW ESSAY

### ST JAMES PARISH, LOUISIANA, USA



VIEW ESSAY

### YUNLIN COUNTY, TAIWAN



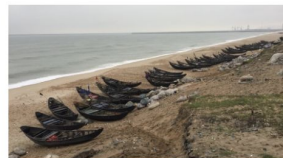
VIEW ESSAY

### KAOHSIUNG CITY, TAIWAN



VIEW ESSAY

### FORMOSA HA TINH STEEL, VIETNAM



VIEW ESSAY

### CHANGHUA COUNTY, TAIWAN 彰化縣



VIEW ESSAY

### FORMOSA PLASTICS CORP, TAIWAN



VIEW ESSAY

# ARCHIVES AS PUBLISHING



← METADATA

**SUGAR PLANTATIONS  
CHEMICAL PLANTS  
COVID-19**

**NAVIGATION**

You can move through the exhibition by taking a **guided tour** or **exploring** the different sites on your own.

On every stop, the menu will provide further readings and supplementary teaching material linking the exhibition to the course Environmental Injustice.

**ACCESSING THE MATERIAL**

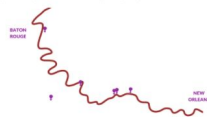
During the tour, you can click through to images, videos, photo essays and text artifacts for additional information.

Note that the exhibit also includes links to outside sources, like newspapers, archives of environmental activists and video platforms.

If you are **registered** on the Disaster STS Network, you can annotate the artifacts using different sets of analytical questions.

The archive is lively and subject to change over time. If you would like to get involved or contribute material, contact Tim Schütz (tschuetz@uci.edu).

**CANCER ALLEY STOPS**



**BACKSTORIES, BY KIM FORTUN**

**A Bhopal on the Bayou?**



VIEW ESSAY

**GEISMAR, LOUISIANA: THE LONGEST LOCKOUT OF WORKERS IN US HISTORY**



**FIRST STOP: MISSISSIPPI RIVER**

QUOTIDIAN ANTHROPOCENES	
ENVIRONMENTAL INJUSTICE	
EJ SUPPLEMENT	FURTHER READINGS
VIEW ALL STOPS	

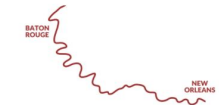


CONTINUE →



← METADATA

**MISSISSIPPI RIVER**



**INDUSTRIAL FACILITIES ALONG THE MISSISSIPPI**



**GULF OF MEXICO DEAD ZONE**



**WHAT IT'S LIKE TO LIVE CANCER ALLEY | NOWTHIS**



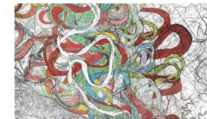
**OIL SLICK IN THE GULF OF MEXICO**



**ST. LOUIS FIELD CAMPUS**

VIEW ESSAY

**AN ANTHROPOCENE RIVER**



*Meandering Mississippi. Map by Harold N. Fisk, US Army Corps of Engineers, 1944 | Geological Investigation of the Alluvial Valley of the Lower Mississippi River.*

NEXT STOP: WHITNEY PLANTATION	
QA FRAMEWORK	EJ FRAMEWORK
EJ SUPPLEMENT	FURTHER READINGS
VIEW ALL STOPS	

**QUESTIONING QUOTIDIAN ANTHROPOCENES**

**DEUTERO:** What capacity (and incapacity) is there to recognize and attend to "the Anthropocene" in this setting? How might academic projects contribute to or scaffold this capacity?

**META:** How is "the Anthropocene" – by this, or some other name – talked and worried about in this setting? What modes of communication carry and occlude engagement with anthropogenics? What discursive histories shape contemporary articulations?

**EXDU:** Who is imagining and planning for anthropocenic futures in this setting, with what modes of expertise, cut by what vested interests? What educational programs -- environmental, civic, media, STEM and so on -- are addressing anthropogenics?

**MACRO:** What economic activities have contributed to anthropocenes in this setting? How are future economies imagined and planned? What laws and policy have addressed anthropocenes?

**MESO:** Who are stakeholders in this quotidian Anthropocene and how do they relate to each other? What forms of political organization have emerged to address and unmake the

# FROM ARCHIVES TO EXHIBITS

# RESEARCH QUESTIONS FOR THE DIGITAL EMPIRICAL HUMANITIES

§ What work flows, data types and analytic models characterize experimental ethnography?

§ What theories and assumptions about language, meaning, knowledge and sociality undergird experimental ethnography?

§ What are the digital implications of the work flows, analytic modes and assumptions of experimental ethnography?

§ How do the digital implications of experimental ethnography align with conventional approaches to cyberinfrastructure development for research communities?

§ How can experimental ethnography be extended (and possibly transformed) through new, digitally enabled modes of collaboration, analysis, and expression?

§ How can experimental ethnography be configured so that its data and findings can be integrated with data and findings from other research fields (including the natural sciences, engineering and health)?

§ What (conceptual, technical, etc.) advantages – and disadvantages – result from conceptualization of experimental ethnography data as “big data”?

§ What digital structures and functions can support – and continually extend experimental



WORLD  
PECE




pece-project.github.io/drupal-pece/

IME Zone Conver...

PECE Documentation Home User's Guide Site Admin's Guide System Admin's Guide Resources

About  
Overview of this Documentation




## About

The Platform for Experimental, Collaborative Ethnography (PECE) is open source (Drupal-based) software supporting virtual research environments for cultural anthropologists, historians, cultural heritage scholars, and other researchers working with diverse data, including extensive unstructured data, largely through interpretive methods. Designed to support the workflows, data types and interpretive modalities particular to these scholars in what we call the "empirical humanities," it also provides a platform for deeply interdisciplinary collaboration with transnational scope. PECE provides space to archive and curate data, facilitates collaborative analysis of data, and enables diverse modes of visualization, scholarly communication, and peer review.

**Stay Connected**  
Find a downloadable distribution of the PECE software at our [GitHub repo](#).  
Stay connected with other PECE users by joining our [Slack Channel](#).  
Sign up for our [monthly newsletter](#) to receive


peceniks.slack.com/join/shared\_invite/enQINzUzMjc4Mjg4NjE5LTMSZWlONWVIMzhhNmFkNDYwNTBhZDA4MDYyZWVNTU5ZjYyZmRlY2EwNDk0ODk1YzN...

IME Zone Conver...

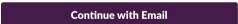


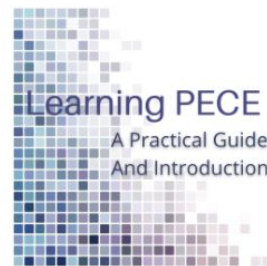
## Join PECEniks on Slack

Start by choosing the Google account or email you use for work.



OR





RETURN TO PECE ESSAY LANDING PAGE

### SESSION 1: GENERAL INTRODUCTION

This session discusses some of the motivations and rationales behind PECE and its development. We also go over a few essential terms and concepts that will be important as we progress through the rest of the sessions.

### SESSION 2: ACCESSIBILITY AND PRIVACY

In this Session, trainees learn how to set up and/or use PECE's different collaboration infrastructures, including Projects, Groups/Subgroups, and Permissions. Trainees will learn how these features can be combined by project designers to enable restrictive spaces for self-reflection, collaborative analysis, and public display.

### SESSION 3: CREATING CONTENT

In this session trainees learn about the different types of content you can create in PECE, including (text, image, pdf, website, video, and audio) Artifacts, Field Memos, and Fieldnotes. Trainees will learn about the various affordances of these different content types and develop a sense of when and how their use may be appropriate.

### SESSION 4: SEARCHING AND ANALYZING CONTENT

This session covers different ways of locating existing PECE content (both your own and others') as well as how to create and utilize PECE's analytic structures to collaboratively annotate this content. Trainees will also learn tips for making their own content easier to find and discover.

### SESSION 5: ORGANIZING CONTENT

In this session, trainees will learn about the various ways that PECE content can be organized into different modes of presentation, including Artifact Bundles, Photo Essays, Timeline Essays, and PECE Essays.

# Learning PECE

## PROJECT PORTAL: ENVIRONMENTAL INJUSTICE GLOBAL RECORD



### PROJECTS

EIJ GLOBAL RECORD: SANTA ANA, CALIFORNIA, USA



VIEW ESSAY

EIJ GLOBAL RECORD: AUSTIN, TEXAS



VIEW ESSAY

EIJ GLOBAL RECORD: SAN GABRIEL VALLEY, USA



VIEW ESSAY

EIJ GLOBAL RECORD: KAOHSIUNG, TAIWAN



VIEW ESSAY

EIJ GLOBAL RECORD: NAVAJO NATION (DINÉ BIKEYAH), USA



VIEW ESSAY

EIJ GLOBAL RECORD: BUNUN TRAILMAKING



VIEW ESSAY

EIJ GLOBAL RECORD: SOUTH KOREA



VIEW ESSAY

SAMPSON COUNTY, NORTH CAROLINA



VIEW ESSAY

## EIJ CALIFORNIA SANTA ANA RESEARCH GROUP

View	Edit	Group	Revisions	Customize display	Preserve links now	
DESCRIPTION	TAB 2	PARENT GROUPS	ARTIFACTS	TAB 5	FIELD DIARY	ESSAYS

Wednesday, April 5, 2023 - 1:09pm

Community forum about the role and impact of the industrial corridor on soil contamination, air pollution, and the health of the community

Leonel is presenting on things that Dr.

(...)

Thursday, March 23, 2023 - 1:47pm

Attended the EJ fireside chat focusing on an air quality initiative in Grand Rapids Michigan on 3/23/23. Panelists

Moderator: Tiffany Werner@ Environmental Project Manager at Clarity

Darren Riley@ Co-Founder & CEO JustAir Solutions@

Kareem Scales@ Co-Chair Community Collaboration on Climate Change@ (C4) (...)

Monday, March 20, 2023 - 12:53pm

Today is Monday (Finals week 2023 winter quarter). This quarter, I had to learn how to balance a heavy work load. It was very challenging for me. I finished inputting artifacts, zotero items in the Hacienda Heights folder and the Santa Ana folder. I was able to upload some audio of Orlando Camacho's interview for MNPA-GREEN! am starting to learn what it takes to make change in the world. I will continue to learn how to connect groups from different areas. A person (or in this case a "company") can no longer lie if everyone is aware of the lies. I do believe that a lot of people are unaware of what is going on around them. (...)

Monday, March 20, 2023 - 3:18am

AB617 meeting South LA March 9th 2023 Asking community members about stories in south LA (SLA) and any initiatives they are taking. Updates by Martha Dino Arguello: Talks about the area in SLA. Monica's cleaners to be converted to wet cleaning. Money from a private donor. Took 20 yrs to implement since Martha's time at SCAQMD. Ruth Andrade: mentioned how citizens did not know the health causes were caused by envt issues (...)

Friday, March 17, 2023 - 6:20pm

James' Notes from AQMD meeting with Arlene Farol Saria and Ricardo Rivera: Arlene: First step of AB617 is Community identification. We take our workshop on the road. Applications can be sent by an individual, city, community org. Fill out a form, self recommendation form. General AB617 webpage, community presentation that they take out to their communities. (...)

Thursday, March 16, 2023 - 12:47am

Event: EcoGovLab meeting with Jill Harrison and Jill Harrison's 'From the Inside Out' talk at UCI Law. Date: 3-9-2023. Location: SBSG windowless conference room/UCI Law School. Speaker: Jill Harrison, Associate Professor, University of Colorado Boulder, Jill Lindsey Harrison | Geography | University of Colorado Boulder@ (...)

Tuesday, March 14, 2023 - 12:58pm

Maya is a science organizer with the Orange County Environmental Justice non-profit organization that focuses on low-income communities in the county that are exposed to pollutants more than

## EIJ CALIFORNIA SANTA ANA RESEARCH GROUP

View	Edit	Group	Revisions	Customize display	Preserve links now	
DESCRIPTION	TAB 2	PARENT GROUPS	ARTIFACTS	TAB 5	FIELD DIARY	ESSAYS

CHARACTERIZING PFAS IN SANTA ANA

ZOTERO BIBLIOGRAPHY SUKRITI KAPUR

RECAP VIDEO OF DTSC MEETING IN HACIENDA HEIGHTS (2-8-23)

WHO TO CALL - HOMELESS RESOURCES AND SERVICES

FLOOD CHANNEL JURISDICTION FLYER - SANTA ANA

YOU ARE THE GROUP MANAGER

EIJ CALIFORNIA SANTA ANA RESEARCH GROUP MEMBERS

### GROUP OWNERS

KIM FORTUN

KAREN VALLADARES

SUKRITI KAPUR

JEREMY WAKEEN

KASEY EDWARDS

MARGAUX FISHER

SIERRA HOWARD

ABRAHAM DURAN-DIAZ

SHANNON COTTON

JAMES ADAMS

JOSEPH RAUL TRINIDAD

## EIJ CALIFORNIA SANTA ANA RESEARCH GROUP

View	Edit	Group	Revisions	Customize display	Preserve links now	
DESCRIPTION	TAB 2	PARENT GROUPS	ARTIFACTS	TAB 5	FIELD DIARY	ESSAYS

ECOCOVLAB TALKS WITH SANTA ANA, FOCUSING ON LEAD

ECOCOVLAB TALKS WITH SANTA ANA

LEAD POLLUTION DATA AND ADVOCACY RESOURCES (SANTA ANA, CALIFORNIA)

VIEW ESSAY

EIJ GLOBAL RECORD #45 PANEL

SANTA ANA FEDERAL RISK MANAGEMENT PLAN (RMP) FACILITIES OVERVIEW

YOU ARE THE GROUP MANAGER

EIJ CALIFORNIA SANTA ANA RESEARCH GROUP MEMBERS

### GROUP OWNERS

KIM FORTUN

KAREN VALLADARES

SUKRITI KAPUR

YOU ARE THE GROUP MANAGER

EIJ CALIFORNIA SANTA ANA RESEARCH GROUP MEMBERS

### GROUP OWNERS

KIM FORTUN

KAREN VALLADARES

SUKRITI KAPUR

# LEARNING THROUGH COLLABORATIVE PROJECTS



## SKETCHING ETHNOGRAPHY

Fall 2021 Seminar  
**ARCHIVE ETHNOGRAPHY**

Professor Kim Fortun  
10am-1pm PT | [Zoom Link](#)  
UCI SBSG 3323

Archive Ethnography is an emerging, experimental way to produce, curate, communicate and politically activate ethnographic knowledge. It involves the curation of purposefully diverse data for an ethnographer's own analysis and interpretation; it enables collaborations with other ethnographers, with researchers in other disciplines and with the people and systems ethnographers study (with special interest in their data practices and infrastructures); it is mindful of its own encoded ideology and enables many different forms of ethnographic expression and engagement.

## TABLE OF CONTENTS

[notes on sketching](#)

### Figuring the Ethnographer

- [Questioning Texts](#)
- [Reading Digital Projects](#)
- [Wish List 2070](#)
- [Project Hopping](#)
- [Programming and Projecting](#)
- [Keywording](#)
- [Habits, Talents Neuroses](#)
- [Biosketch 2040](#)

### Infrastructuring Ethnography

- [Staccato Project Designs\\*](#)
- [Visualizing "the Point" of the Project \\*\\*](#)
- [Building Literature Reviews, Emic and Etic\\*](#)
- [Scripting Ethnographic Encounters](#)
- [Across Scales and Systems \\*](#)
- [Hierarchy of Questions \\*](#)
- [Activating Bibliodiversity \(by Angela Okune\)](#)
- [Anticipating Ethics \\*](#)
- [Sharing Experimental Ethnographic Methods](#)

### Designing Archive Ethnography

- [Indexing Ethnographic Data Types](#)
- [Planning for Ethnographic Data Management](#)
- [Borrowing Documentation to Share](#)
- [Curating Borrowed Data](#)
- [Conceptualizing Ethnographic Archives](#)
- [Archive Technics](#)
- [Leveraging PECE in Ethnographic Archives](#)

### Creating Ethnographic Data

- [Data Ethnography](#)
- [Quotidian Timeline and Organizations](#)
- [Historicizing a Project](#)
- [Peopling a Project](#)
- [Found Visualizations](#)
- [Profiling Organizations](#)
- [Tactical Interviewing](#)

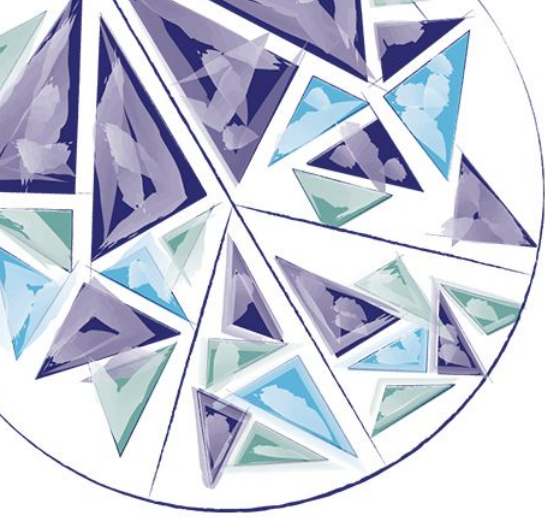
### Ethno Analytics

- [Mapping Subject Positions](#)
- [Mapping Binaries and Discursive Gaps](#)
- [Competing Hegemonies](#)
- [Toxic Subjects](#)
- [Designating Late Industrialism](#)
- [Pointed Vignettes](#)

### Relaying Ethnography

- [Architecturing Ethnographic Texts](#)
- [Body Chapter Summaries](#)
- [Drawing out Ethnographic Methods](#)
- [Fabulating Introductions](#)
- [Checking Ethnographic Texts](#)
- [Archiving for an Ethnographic Commons](#)
- [Ethnography for Undergraduates](#)
- [Ethnography Beyond Campus](#)
- [Exhibiting Ethnography](#)

# Teaching data curation as method



# Building PECE and Archive Ethnography

**CfC**